
VILLE DE BROSSARD

RELEVÉ DE VITESSE
SUR LE CHEMIN DES PRAIRIES À BROSSARD
ENTRE LES RUES ONTARIO ET OSLO



12 JUILLET 2010

N/D : 16740-001

Ville de Brossard

TABLE DES MATIÈRES

Relevé de comptage sur le chemin des Prairies à Brossard

1.0	Notre mandat	1
2.0	Collecte des données.....	2
3.0	Compréhension des données recueillies	3
4.0	Moyenne des vitesses et intervalles	4
5.0	Commentaires très généraux sur les résultats	5

ANNEXES

Annexe 1	Relevés de vitesse: Intervalle de 15 minutes
Annexe 2	Relevés – Type de véhicules
Annexe 3	Relevés – Données brutes

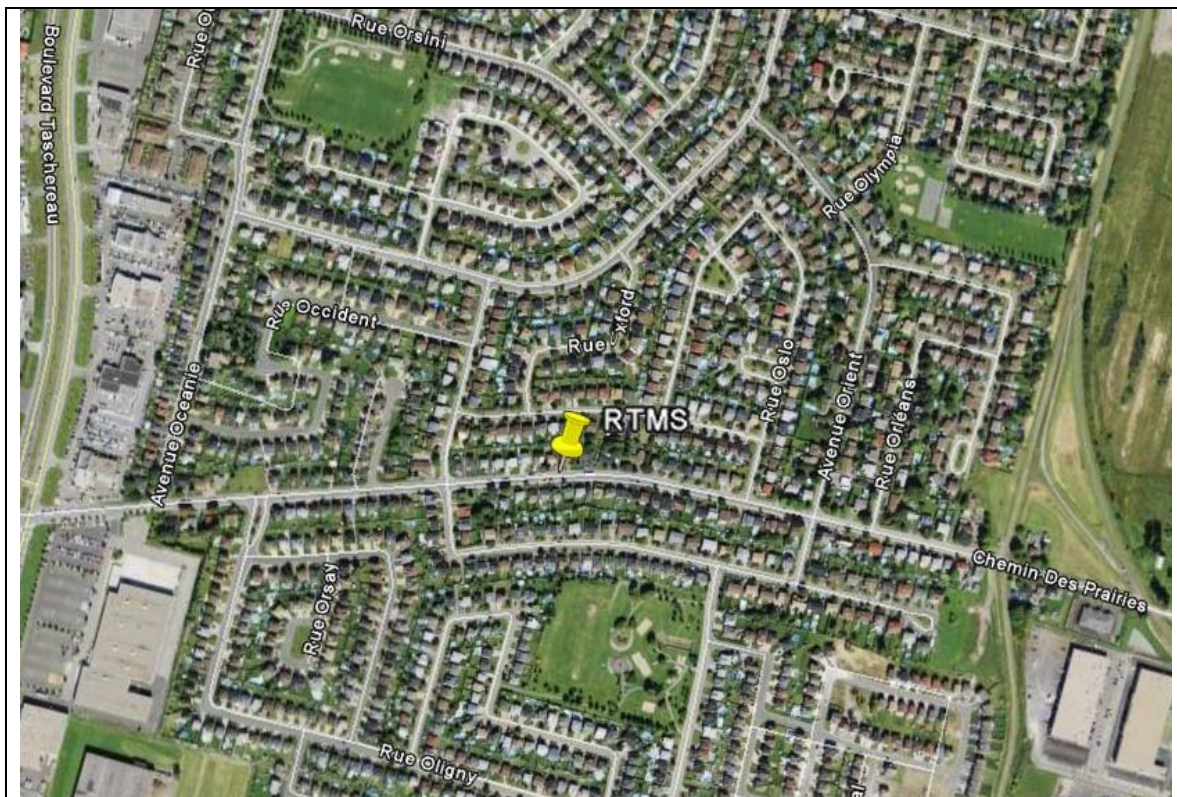
1.0 NOTRE MANDAT

Le mandat de Cegertec consiste à effectuer et présenter des relevés de vitesse par catégorie de véhicules routiers circulant sur le chemin des Prairies entre les rues Ontario et Oslo.

2.0 COLLECTE DES DONNÉES

Cegertec a effectué la collecte des données sur une plage horaire de 96 heures débutant à 00 h 00 dans la nuit du mercredi au jeudi 17 juin et se terminant à 24 h (minuit) le dimanche 20 juin 2010.

Ce relevé a été réalisé à l'aide de plaques Nu-Metrics permettant de détecter à la fois, la présence de véhicules, leur vitesse et leur longueur. Les informations recueillies par les plaques sont archivées sur une carte mémoire et il est ensuite possible d'y extraire les données. Les données extraites sont présentées dans les tableaux de format Excel que nous avons joints au présent document (Annexes 1, 2 et 3)



Relevé de vitesse sur le chemin des Prairies à Brossard
Entre la rue Ontario et Oslo

3.0 COMPRÉHENSION DES DONNÉES RECUEILLIES

Les plaques Nu-Metrics regroupent les véhicules selon leur longueur, et départagent les données en neuf catégories couvrant une longueur de 0 à 30 m. L'annexe 3 présente les résultats bruts obtenus en fonction de ces neuf créneaux de longueurs de véhicules.

Les données recueillies ont été regroupées de nouveau selon trois (3) types de véhicules et par jour. Les trois (3) catégories sont les suivantes :

- Automobile : Un véhicule mesurant moins de 6,3 m ;
- Camion léger : Un véhicule mesurant entre 6,4 m et 12,1 m ;
- Camion long : Un véhicule mesurant plus de 12,2 m.

Les annexes 1 et 2 présentent les données recueillies par jour (jeudi, vendredi, samedi et dimanche) selon le type de véhicule et selon leur vitesse.

4.0 MOYENNE DES VITESSES ET INTERVALLES

Le logiciel traite les données recueillies et calcule la moyenne des vitesses captées selon un intervalle donné. Pour ce relevé, le calcul de la moyenne des vitesses a été programmé afin de s'effectuer à un intervalle de 15 minutes. Le fichier Excel vous est remis afin que vous puissiez étudier et analyser les résultats à votre convenance.

Le calcul de la moyenne des vitesses recensées à intervalle de 15 minutes permet seulement d'avoir une idée des vitesses pratiquées, par exemple, si cinq (5) véhicules ont circulé dans une direction à l'intérieur d'un intervalle de 15 minutes et que la moyenne est de 50 km/h, il se peut que l'un de ces véhicules ait roulé à 70km/h et que les quatre autres roulaient à 45 km/h.

La moyenne des vitesses captées est calculée pour chaque intervalle et pour chacune des directions, mais n'est pas calculée en fonction des types de véhicules.

5.0 COMMENTAIRES TRÈS GÉNÉRAUX SUR LES RÉSULTATS

D'après les résultats obtenus, on remarque que la vitesse moyenne est semblable dans les deux directions et que celle-ci se situe entre 52,03 km/h et 54,57 km/h. On remarque également que le volume de circulation est plus élevé en direction ouest qu'en direction est.



Céline Foucault, ing.
Chargée de projet
CF/tm

Ville de Brossard

Relevé de vitesse sur le chemin des Prairies à Brossard

Annexe 1

Relevés de vitesse: Intervalle de 15 minutes



Vitesses moyennes

Jeudi

Date: 17 juin 2010
Localisation: Chemin Des Prairies, entre les rues Ontario et Oslo
Intervalle: 15 minutes

Direction Est

Direction Ouest

Période	Volume	Vitesse moyenne
[00:00-00:15]	4	55
[00:15-00:30]	3	52
[00:30-00:45]	4	58
[00:45-01:00]	7	50
[01:00-01:15]	1	65
[01:15-01:30]	2	60
[01:30-01:45]	2	60
[01:45-02:00]	1	65
[02:00-02:15]	0	0
[02:15-02:30]	1	65
[02:30-02:45]	2	60
[02:45-03:00]	1	55
[03:00-03:15]	1	55
[03:15-03:30]	2	60
[03:30-03:45]	0	0
[03:45-04:00]	2	60
[04:00-04:15]	0	0
[04:15-04:30]	0	0
[04:30-04:45]	1	55
[04:45-05:00]	0	0
[05:00-05:15]	0	0
[05:15-05:30]	3	55
[05:30-05:45]	2	65
[05:45-06:00]	2	45
[06:00-06:15]	4	55
[06:15-06:30]	10	56
[06:30-06:45]	4	53
[06:45-07:00]	14	58
[07:00-07:15]	12	55
[07:15-07:30]	19	57
[07:30-07:45]	20	53
[07:45-08:00]	19	56
[08:00-08:15]	18	55
[08:15-08:30]	23	51
[08:30-08:45]	34	56
[08:45-09:00]	16	56
[09:00-09:15]	16	52

Période	Volume	Vitesse moyenne
[00:00-00:15]	2	45
[00:15-00:30]	8	51
[00:30-00:45]	2	33
[00:45-01:00]	5	61
[01:00-01:15]	2	55
[01:15-01:30]	2	60
[01:30-01:45]	3	62
[01:45-02:00]	0	0
[02:00-02:15]	0	0
[02:15-02:30]	0	0
[02:30-02:45]	0	0
[02:45-03:00]	0	0
[03:00-03:15]	0	0
[03:15-03:30]	2	55
[03:30-03:45]	2	45
[03:45-04:00]	1	65
[04:00-04:15]	0	0
[04:15-04:30]	1	55
[04:30-04:45]	2	65
[04:45-05:00]	2	35
[05:00-05:15]	2	55
[05:15-05:30]	7	66
[05:30-05:45]	9	62
[05:45-06:00]	12	69
[06:00-06:15]	15	57
[06:15-06:30]	24	57
[06:30-06:45]	31	59
[06:45-07:00]	44	60
[07:00-07:15]	36	60
[07:15-07:30]	46	61
[07:30-07:45]	63	52
[07:45-08:00]	65	54
[08:00-08:15]	55	52
[08:15-08:30]	52	59
[08:30-08:45]	48	53
[08:45-09:00]	68	53
[09:00-09:15]	31	53



Vitesses moyennes

Jeudi

Date: 17 juin 2010
Localisation: Chemin Des Prairies, entre les rues Ontario et Oslo
Intervalle: 15 minutes

Direction Est

Direction Ouest

Période	Volume	Vitesse moyenne
[09:15-09:30]	14	51
[09:30-09:45]	14	52
[09:45-10:00]	17	49
[10:00-10:15]	19	51
[10:15-10:30]	16	52
[10:30-10:45]	23	46
[10:45-11:00]	21	49
[11:00-11:15]	19	54
[11:15-11:30]	22	54
[11:30-11:45]	23	50
[11:45-12:00]	21	49
[12:00-12:15]	26	51
[12:15-12:30]	21	52
[12:30-12:45]	30	51
[12:45-13:00]	21	55
[13:00-13:15]	23	54
[13:15-13:30]	11	51
[13:30-13:45]	28	53
[13:45-14:00]	15	53
[14:00-14:15]	24	49
[14:15-14:30]	20	55
[14:30-14:45]	23	49
[14:45-15:00]	21	49
[15:00-15:15]	16	44
[15:15-15:30]	8	45
[15:30-15:45]	8	56
[15:45-16:00]	5	55
[16:00-16:15]	17	55
[16:15-16:30]	14	51
[16:30-16:45]	15	56
[16:45-17:00]	33	53
[17:00-17:15]	46	51
[17:15-17:30]	62	56
[17:30-17:45]	59	56
[17:45-18:00]	50	56
[18:00-18:15]	53	55
[18:15-18:30]	53	57

Période	Volume	Vitesse moyenne
[09:15-09:30]	27	57
[09:30-09:45]	35	52
[09:45-10:00]	33	60
[10:00-10:15]	24	56
[10:15-10:30]	21	56
[10:30-10:45]	30	55
[10:45-11:00]	28	55
[11:00-11:15]	27	56
[11:15-11:30]	35	58
[11:30-11:45]	37	54
[11:45-12:00]	31	54
[12:00-12:15]	39	55
[12:15-12:30]	33	60
[12:30-12:45]	37	56
[12:45-13:00]	35	52
[13:00-13:15]	40	54
[13:15-13:30]	30	59
[13:30-13:45]	28	52
[13:45-14:00]	25	52
[14:00-14:15]	33	58
[14:15-14:30]	36	54
[14:30-14:45]	30	53
[14:45-15:00]	26	53
[15:00-15:15]	37	51
[15:15-15:30]	32	53
[15:30-15:45]	34	50
[15:45-16:00]	24	55
[16:00-16:15]	34	56
[16:15-16:30]	36	54
[16:30-16:45]	39	56
[16:45-17:00]	54	54
[17:00-17:15]	51	55
[17:15-17:30]	50	51
[17:30-17:45]	46	55
[17:45-18:00]	60	58
[18:00-18:15]	37	53
[18:15-18:30]	62	53



Vitesses moyennes

Jeudi

Date: 17 juin 2010
Localisation: Chemin Des Prairies, entre les rues Ontario et Oslo
Intervalle: 15 minutes

Direction Est

Période	Volume	Vitesse moyenne
[18:30-18:45]	31	56
[18:45-19:00]	42	51
[19:00-19:15]	48	52
[19:15-19:30]	39	53
[19:30-19:45]	31	50
[19:45-20:00]	46	56
[20:00-20:15]	29	53
[20:15-20:30]	32	50
[20:30-20:45]	30	50
[20:45-21:00]	22	48
[21:00-21:15]	34	55
[21:15-21:30]	25	47
[21:30-21:45]	21	54
[21:45-22:00]	18	58
[22:00-22:15]	17	51
[22:15-22:30]	11	52
[22:30-22:45]	16	53
[22:45-23:00]	9	56
[23:00-23:15]	9	55
[23:15-23:30]	8	55
[23:30-23:45]	8	53
[23:45-00:00]	5	57

Vitesse moyenne de la journée 53.08

Direction Ouest

Période	Volume	Vitesse moyenne
[18:30-18:45]	36	54
[18:45-19:00]	44	50
[19:00-19:15]	51	49
[19:15-19:30]	34	54
[19:30-19:45]	38	55
[19:45-20:00]	42	55
[20:00-20:15]	40	53
[20:15-20:30]	25	52
[20:30-20:45]	32	51
[20:45-21:00]	44	51
[21:00-21:15]	9	51
[21:15-21:30]	49	52
[21:30-21:45]	26	52
[21:45-22:00]	19	51
[22:00-22:15]	15	50
[22:15-22:30]	19	54
[22:30-22:45]	16	54
[22:45-23:00]	14	57
[23:00-23:15]	8	59
[23:15-23:30]	10	60
[23:30-23:45]	11	62
[23:45-00:00]	3	52

Vitesse moyenne de la journée 54.52



Vitesses moyennes

Vendredi

Date: 18 juin 2010
Localisation: Chemin Des Prairies, entre les rues Ontario et Oslo
Intervalle: 15 minutes

Direction Est

Direction Ouest

Période	Volume	Vitesse moyenne
[00:00-00:15]	8	61
[00:15-00:30]	3	55
[00:30-00:45]	7	55
[00:45-01:00]	5	57
[01:00-01:15]	5	61
[01:15-01:30]	1	65
[01:30-01:45]	2	80
[01:45-02:00]	3	55
[02:00-02:15]	1	115
[02:15-02:30]	1	55
[02:30-02:45]	0	0
[02:45-03:00]	1	45
[03:00-03:15]	0	0
[03:15-03:30]	1	0
[03:30-03:45]	0	0
[03:45-04:00]	0	0
[04:00-04:15]	0	0
[04:15-04:30]	0	0
[04:30-04:45]	0	0
[04:45-05:00]	0	0
[05:00-05:15]	2	28
[05:15-05:30]	3	55
[05:30-05:45]	1	75
[05:45-06:00]	1	65
[06:00-06:15]	4	60
[06:15-06:30]	5	57
[06:30-06:45]	10	55
[06:45-07:00]	9	48
[07:00-07:15]	6	57
[07:15-07:30]	18	54
[07:30-07:45]	23	52
[07:45-08:00]	16	54
[08:00-08:15]	20	50
[08:15-08:30]	24	58
[08:30-08:45]	20	46
[08:45-09:00]	16	56
[09:00-09:15]	23	50

Période	Volume	Vitesse moyenne
[00:00-00:15]	15	55
[00:15-00:30]	6	55
[00:30-00:45]	4	58
[00:45-01:00]	2	70
[01:00-01:15]	5	65
[01:15-01:30]	2	60
[01:30-01:45]	3	65
[01:45-02:00]	2	55
[02:00-02:15]	0	0
[02:15-02:30]	1	85
[02:30-02:45]	0	0
[02:45-03:00]	2	75
[03:00-03:15]	0	0
[03:15-03:30]	1	0
[03:30-03:45]	2	55
[03:45-04:00]	4	60
[04:00-04:15]	1	45
[04:15-04:30]	2	65
[04:30-04:45]	0	0
[04:45-05:00]	3	58
[05:00-05:15]	3	55
[05:15-05:30]	3	62
[05:30-05:45]	7	58
[05:45-06:00]	16	59
[06:00-06:15]	12	56
[06:15-06:30]	19	57
[06:30-06:45]	40	55
[06:45-07:00]	42	60
[07:00-07:15]	38	56
[07:15-07:30]	55	58
[07:30-07:45]	60	57
[07:45-08:00]	72	55
[08:00-08:15]	50	54
[08:15-08:30]	60	56
[08:30-08:45]	45	53
[08:45-09:00]	36	55
[09:00-09:15]	42	55



Vitesses moyennes

Vendredi

Date: 18 juin 2010
Localisation: Chemin Des Prairies, entre les rues Ontario et Oslo
Intervalle: 15 minutes

Direction Est

Direction Ouest

Période	Volume	Vitesse moyenne
[09:15-09:30]	25	54
[09:30-09:45]	17	56
[09:45-10:00]	26	55
[10:00-10:15]	25	51
[10:15-10:30]	27	49
[10:30-10:45]	25	48
[10:45-11:00]	22	50
[11:00-11:15]	23	56
[11:15-11:30]	42	51
[11:30-11:45]	24	54
[11:45-12:00]	29	51
[12:00-12:15]	29	56
[12:15-12:30]	25	53
[12:30-12:45]	48	54
[12:45-13:00]	29	52
[13:00-13:15]	32	53
[13:15-13:30]	29	52
[13:30-13:45]	19	54
[13:45-14:00]	28	53
[14:00-14:15]	22	53
[14:15-14:30]	33	55
[14:30-14:45]	30	51
[14:45-15:00]	28	54
[15:00-15:15]	38	50
[15:15-15:30]	43	53
[15:30-15:45]	22	54
[15:45-16:00]	25	51
[16:00-16:15]	12	53
[16:15-16:30]	44	52
[16:30-16:45]	53	55
[16:45-17:00]	59	51
[17:00-17:15]	43	57
[17:15-17:30]	59	56
[17:30-17:45]	51	55
[17:45-18:00]	69	55
[18:00-18:15]	43	55
[18:15-18:30]	49	53

Période	Volume	Vitesse moyenne
[09:15-09:30]	20	61
[09:30-09:45]	28	55
[09:45-10:00]	26	57
[10:00-10:15]	26	54
[10:15-10:30]	28	52
[10:30-10:45]	15	63
[10:45-11:00]	23	53
[11:00-11:15]	28	56
[11:15-11:30]	28	54
[11:30-11:45]	39	54
[11:45-12:00]	39	53
[12:00-12:15]	25	51
[12:15-12:30]	29	53
[12:30-12:45]	25	55
[12:45-13:00]	27	55
[13:00-13:15]	35	51
[13:15-13:30]	40	50
[13:30-13:45]	29	52
[13:45-14:00]	21	58
[14:00-14:15]	21	55
[14:15-14:30]	27	55
[14:30-14:45]	36	50
[14:45-15:00]	32	56
[15:00-15:15]	36	53
[15:15-15:30]	39	55
[15:30-15:45]	42	54
[15:45-16:00]	27	49
[16:00-16:15]	38	56
[16:15-16:30]	59	54
[16:30-16:45]	42	53
[16:45-17:00]	46	55
[17:00-17:15]	51	53
[17:15-17:30]	48	54
[17:30-17:45]	45	54
[17:45-18:00]	47	54
[18:00-18:15]	47	53
[18:15-18:30]	44	56



Vitesses moyennes

Vendredi

Date: 18 juin 2010
Localisation: Chemin Des Prairies, entre les rues Ontario et Oslo
Intervalle: 15 minutes

Direction Est

Direction Ouest

Période	Volume	Vitesse moyenne
[18:30-18:45]	51	58
[18:45-19:00]	46	50
[19:00-19:15]	23	53
[19:15-19:30]	41	53
[19:30-19:45]	40	52
[19:45-20:00]	49	51
[20:00-20:15]	37	51
[20:15-20:30]	32	55
[20:30-20:45]	26	49
[20:45-21:00]	16	56
[21:00-21:15]	24	53
[21:15-21:30]	31	49
[21:30-21:45]	35	50
[21:45-22:00]	29	51
[22:00-22:15]	24	54
[22:15-22:30]	10	47
[22:30-22:45]	14	52
[22:45-23:00]	11	57
[23:00-23:15]	11	51
[23:15-23:30]	16	54
[23:30-23:45]	12	55
[23:45-00:00]	13	52

Période	Volume	Vitesse moyenne
[18:30-18:45]	36	55
[18:45-19:00]	46	52
[19:00-19:15]	44	52
[19:15-19:30]	25	52
[19:30-19:45]	48	48
[19:45-20:00]	36	54
[20:00-20:15]	16	50
[20:15-20:30]	35	54
[20:30-20:45]	39	51
[20:45-21:00]	40	50
[21:00-21:15]	30	54
[21:15-21:30]	24	55
[21:30-21:45]	32	53
[21:45-22:00]	29	52
[22:00-22:15]	20	50
[22:15-22:30]	27	55
[22:30-22:45]	15	54
[22:45-23:00]	13	58
[23:00-23:15]	11	51
[23:15-23:30]	15	51
[23:30-23:45]	16	54
[23:45-00:00]	15	55

Vitesse moyenne de la journée

53.08

Vitesse moyenne de la journée

54.15



Vitesses moyennes

Samedi

Date: 19 juin 2010
Localisation: Chemin Des Prairies, entre les rues Ontario et Oslo
Intervalle: 15 minutes

Direction Est

Direction Ouest

Période	Volume	Vitesse moyenne
[00:00-00:15]	9	55
[00:15-00:30]	9	57
[00:30-00:45]	7	58
[00:45-01:00]	11	58
[01:00-01:15]	8	59
[01:15-01:30]	7	55
[01:30-01:45]	2	55
[01:45-02:00]	3	55
[02:00-02:15]	2	50
[02:15-02:30]	1	55
[02:30-02:45]	3	62
[02:45-03:00]	5	53
[03:00-03:15]	3	62
[03:15-03:30]	4	50
[03:30-03:45]	1	65
[03:45-04:00]	0	0
[04:00-04:15]	2	75
[04:15-04:30]	0	0
[04:30-04:45]	1	25
[04:45-05:00]	0	0
[05:00-05:15]	2	40
[05:15-05:30]	1	45
[05:30-05:45]	3	55
[05:45-06:00]	1	55
[06:00-06:15]	3	47
[06:15-06:30]	2	35
[06:30-06:45]	6	55
[06:45-07:00]	5	53
[07:00-07:15]	4	65
[07:15-07:30]	10	51
[07:30-07:45]	13	55
[07:45-08:00]	10	47
[08:00-08:15]	10	46
[08:15-08:30]	22	54
[08:30-08:45]	18	54
[08:45-09:00]	27	56
[09:00-09:15]	24	48

Période	Volume	Vitesse moyenne
[00:00-00:15]	8	55
[00:15-00:30]	14	58
[00:30-00:45]	8	63
[00:45-01:00]	6	60
[01:00-01:15]	2	70
[01:15-01:30]	4	50
[01:30-01:45]	6	50
[01:45-02:00]	0	0
[02:00-02:15]	6	52
[02:15-02:30]	2	60
[02:30-02:45]	1	45
[02:45-03:00]	3	68
[03:00-03:15]	2	65
[03:15-03:30]	1	65
[03:30-03:45]	2	45
[03:45-04:00]	1	45
[04:00-04:15]	0	0
[04:15-04:30]	0	0
[04:30-04:45]	1	75
[04:45-05:00]	0	0
[05:00-05:15]	2	55
[05:15-05:30]	4	65
[05:30-05:45]	5	63
[05:45-06:00]	2	60
[06:00-06:15]	4	73
[06:15-06:30]	3	48
[06:30-06:45]	7	64
[06:45-07:00]	5	67
[07:00-07:15]	8	61
[07:15-07:30]	17	50
[07:30-07:45]	7	54
[07:45-08:00]	9	63
[08:00-08:15]	16	58
[08:15-08:30]	15	50
[08:30-08:45]	23	57
[08:45-09:00]	29	53
[09:00-09:15]	34	56



Vitesses moyennes

Samedi

Date: 19 juin 2010
Localisation: Chemin Des Prairies, entre les rues Ontario et Oslo
Intervalle: 15 minutes

Direction Est

Direction Ouest

Période	Volume	Vitesse moyenne
[09:15-09:30]	18	50
[09:30-09:45]	32	53
[09:45-10:00]	38	51
[10:00-10:15]	39	52
[10:15-10:30]	30	54
[10:30-10:45]	36	55
[10:45-11:00]	41	50
[11:00-11:15]	44	52
[11:15-11:30]	47	53
[11:30-11:45]	48	54
[11:45-12:00]	47	53
[12:00-12:15]	36	54
[12:15-12:30]	34	54
[12:30-12:45]	34	55
[12:45-13:00]	42	52
[13:00-13:15]	39	56
[13:15-13:30]	46	52
[13:30-13:45]	41	54
[13:45-14:00]	42	51
[14:00-14:15]	50	51
[14:15-14:30]	47	53
[14:30-14:45]	44	51
[14:45-15:00]	36	54
[15:00-15:15]	41	51
[15:15-15:30]	52	52
[15:30-15:45]	46	54
[15:45-16:00]	53	54
[16:00-16:15]	44	53
[16:15-16:30]	40	53
[16:30-16:45]	40	57
[16:45-17:00]	33	53
[17:00-17:15]	36	57
[17:15-17:30]	23	53
[17:30-17:45]	37	56
[17:45-18:00]	18	51
[18:00-18:15]	20	59
[18:15-18:30]	23	58

Période	Volume	Vitesse moyenne
[09:15-09:30]	34	55
[09:30-09:45]	25	56
[09:45-10:00]	36	56
[10:00-10:15]	34	59
[10:15-10:30]	47	51
[10:30-10:45]	50	57
[10:45-11:00]	43	55
[11:00-11:15]	41	57
[11:15-11:30]	63	53
[11:30-11:45]	47	58
[11:45-12:00]	45	56
[12:00-12:15]	48	58
[12:15-12:30]	35	57
[12:30-12:45]	52	53
[12:45-13:00]	45	55
[13:00-13:15]	51	59
[13:15-13:30]	39	54
[13:30-13:45]	38	53
[13:45-14:00]	55	56
[14:00-14:15]	57	57
[14:15-14:30]	48	54
[14:30-14:45]	38	50
[14:45-15:00]	61	55
[15:00-15:15]	42	54
[15:15-15:30]	52	54
[15:30-15:45]	44	52
[15:45-16:00]	50	55
[16:00-16:15]	57	51
[16:15-16:30]	63	55
[16:30-16:45]	42	53
[16:45-17:00]	55	49
[17:00-17:15]	58	55
[17:15-17:30]	52	56
[17:30-17:45]	32	56
[17:45-18:00]	13	54
[18:00-18:15]	26	61
[18:15-18:30]	32	52



Vitesses moyennes

Samedi

Date: 19 juin 2010
Localisation: Chemin Des Prairies, entre les rues Ontario et Oslo
Intervalle: 15 minutes

Direction Est

Période	Volume	Vitesse moyenne
[18:30-18:45]	35	55
[18:45-19:00]	22	56
[19:00-19:15]	26	52
[19:15-19:30]	17	53
[19:30-19:45]	20	52
[19:45-20:00]	17	51
[20:00-20:15]	12	51
[20:15-20:30]	16	55
[20:30-20:45]	9	50
[20:45-21:00]	25	51
[21:00-21:15]	12	47
[21:15-21:30]	13	52
[21:30-21:45]	13	50
[21:45-22:00]	9	53
[22:00-22:15]	11	50
[22:15-22:30]	11	50
[22:30-22:45]	15	52
[22:45-23:00]	14	50
[23:00-23:15]	9	57
[23:15-23:30]	11	52
[23:30-23:45]	17	53
[23:45-00:00]	11	55

Vitesse moyenne de la journée

53.06

Direction Ouest

Période	Volume	Vitesse moyenne
[18:30-18:45]	30	54
[18:45-19:00]	22	55
[19:00-19:15]	29	53
[19:15-19:30]	27	53
[19:30-19:45]	24	53
[19:45-20:00]	14	51
[20:00-20:15]	20	54
[20:15-20:30]	19	56
[20:30-20:45]	14	54
[20:45-21:00]	13	50
[21:00-21:15]	24	49
[21:15-21:30]	18	54
[21:30-21:45]	29	51
[21:45-22:00]	14	53
[22:00-22:15]	15	51
[22:15-22:30]	11	54
[22:30-22:45]	15	55
[22:45-23:00]	11	50
[23:00-23:15]	14	57
[23:15-23:30]	12	54
[23:30-23:45]	11	53
[23:45-00:00]	19	51

Vitesse moyenne de la journée

54.57



Vitesses moyennes

Dimanche

Date: 20 juin 2010
Localisation: Chemin Des Prairies, entre les rues Ontario et Oslo
Intervalle: 15 minutes

Direction Est

Direction Ouest

Période	Volume	Vitesse moyenne
[00:00-00:15]	6	55
[00:15-00:30]	10	56
[00:30-00:45]	10	47
[00:45-01:00]	9	58
[01:00-01:15]	10	55
[01:15-01:30]	1	65
[01:30-01:45]	4	65
[01:45-02:00]	6	50
[02:00-02:15]	3	52
[02:15-02:30]	5	55
[02:30-02:45]	2	50
[02:45-03:00]	5	53
[03:00-03:15]	4	55
[03:15-03:30]	5	57
[03:30-03:45]	3	75
[03:45-04:00]	1	65
[04:00-04:15]	0	0
[04:15-04:30]	2	55
[04:30-04:45]	2	55
[04:45-05:00]	1	75
[05:00-05:15]	0	0
[05:15-05:30]	1	75
[05:30-05:45]	1	35
[05:45-06:00]	0	0
[06:00-06:15]	0	0
[06:15-06:30]	0	0
[06:30-06:45]	2	50
[06:45-07:00]	1	45
[07:00-07:15]	3	52
[07:15-07:30]	2	50
[07:30-07:45]	2	65
[07:45-08:00]	4	60
[08:00-08:15]	5	51
[08:15-08:30]	8	49
[08:30-08:45]	10	52
[08:45-09:00]	13	46
[09:00-09:15]	19	54

Période	Volume	Vitesse moyenne
[00:00-00:15]	12	59
[00:15-00:30]	9	55
[00:30-00:45]	9	56
[00:45-01:00]	8	49
[01:00-01:15]	2	45
[01:15-01:30]	3	62
[01:30-01:45]	4	58
[01:45-02:00]	4	65
[02:00-02:15]	3	58
[02:15-02:30]	5	61
[02:30-02:45]	1	75
[02:45-03:00]	3	62
[03:00-03:15]	4	78
[03:15-03:30]	3	62
[03:30-03:45]	6	62
[03:45-04:00]	1	55
[04:00-04:15]	1	55
[04:15-04:30]	3	78
[04:30-04:45]	1	75
[04:45-05:00]	1	65
[05:00-05:15]	2	55
[05:15-05:30]	2	70
[05:30-05:45]	0	0
[05:45-06:00]	2	60
[06:00-06:15]	5	55
[06:15-06:30]	1	55
[06:30-06:45]	4	65
[06:45-07:00]	7	61
[07:00-07:15]	3	52
[07:15-07:30]	6	60
[07:30-07:45]	3	62
[07:45-08:00]	8	61
[08:00-08:15]	5	57
[08:15-08:30]	12	54
[08:30-08:45]	12	53
[08:45-09:00]	17	50
[09:00-09:15]	16	51



Vitesses moyennes

Dimanche

Date: 20 juin 2010
Localisation: Chemin Des Prairies, entre les rues Ontario et Oslo
Intervalle: 15 minutes

Direction Est

Direction Ouest

Période	Volume	Vitesse moyenne
[09:15-09:30]	22	48
[09:30-09:45]	29	54
[09:45-10:00]	25	53
[10:00-10:15]	36	53
[10:15-10:30]	26	50
[10:30-10:45]	31	51
[10:45-11:00]	38	53
[11:00-11:15]	33	48
[11:15-11:30]	37	48
[11:30-11:45]	33	52
[11:45-12:00]	33	51
[12:00-12:15]	37	50
[12:15-12:30]	30	54
[12:30-12:45]	30	55
[12:45-13:00]	28	52
[13:00-13:15]	37	46
[13:15-13:30]	36	52
[13:30-13:45]	30	57
[13:45-14:00]	34	51
[14:00-14:15]	25	47
[14:15-14:30]	30	54
[14:30-14:45]	28	58
[14:45-15:00]	41	54
[15:00-15:15]	29	53
[15:15-15:30]	43	49
[15:30-15:45]	37	50
[15:45-16:00]	38	52
[16:00-16:15]	30	54
[16:15-16:30]	27	49
[16:30-16:45]	26	55
[16:45-17:00]	29	52
[17:00-17:15]	29	55
[17:15-17:30]	32	52
[17:30-17:45]	15	49
[17:45-18:00]	33	54
[18:00-18:15]	28	53
[18:15-18:30]	25	54

Période	Volume	Vitesse moyenne
[09:15-09:30]	33	53
[09:30-09:45]	25	53
[09:45-10:00]	26	55
[10:00-10:15]	34	53
[10:15-10:30]	43	58
[10:30-10:45]	48	52
[10:45-11:00]	47	56
[11:00-11:15]	38	56
[11:15-11:30]	39	56
[11:30-11:45]	40	55
[11:45-12:00]	60	54
[12:00-12:15]	45	57
[12:15-12:30]	37	56
[12:30-12:45]	51	53
[12:45-13:00]	40	54
[13:00-13:15]	41	56
[13:15-13:30]	41	51
[13:30-13:45]	34	53
[13:45-14:00]	44	52
[14:00-14:15]	44	53
[14:15-14:30]	41	53
[14:30-14:45]	34	54
[14:45-15:00]	38	51
[15:00-15:15]	46	51
[15:15-15:30]	49	51
[15:30-15:45]	42	53
[15:45-16:00]	51	51
[16:00-16:15]	56	49
[16:15-16:30]	50	54
[16:30-16:45]	58	55
[16:45-17:00]	58	51
[17:00-17:15]	59	50
[17:15-17:30]	46	56
[17:30-17:45]	36	53
[17:45-18:00]	38	54
[18:00-18:15]	31	50
[18:15-18:30]	27	49



Vitesses moyennes

Dimanche

Date: 20 juin 2010
Localisation: Chemin Des Prairies, entre les rues Ontario et Oslo
Intervalle: 15 minutes

Direction Est

Direction Ouest

Période	Volume	Vitesse moyenne
[18:30-18:45]	17	53
[18:45-19:00]	22	53
[19:00-19:15]	16	57
[19:15-19:30]	20	47
[19:30-19:45]	14	53
[19:45-20:00]	12	55
[20:00-20:15]	16	48
[20:15-20:30]	23	52
[20:30-20:45]	20	52
[20:45-21:00]	14	45
[21:00-21:15]	19	47
[21:15-21:30]	22	50
[21:30-21:45]	14	52
[21:45-22:00]	19	54
[22:00-22:15]	25	52
[22:15-22:30]	17	50
[22:30-22:45]	15	51
[22:45-23:00]	14	51
[23:00-23:15]	11	48
[23:15-23:30]	9	61
[23:30-23:45]	12	58
[23:45-00:00]	7	50

Période	Volume	Vitesse moyenne
[18:30-18:45]	41	51
[18:45-19:00]	30	56
[19:00-19:15]	23	48
[19:15-19:30]	16	48
[19:30-19:45]	15	52
[19:45-20:00]	17	50
[20:00-20:15]	8	55
[20:15-20:30]	20	56
[20:30-20:45]	17	56
[20:45-21:00]	18	52
[21:00-21:15]	19	50
[21:15-21:30]	20	54
[21:30-21:45]	16	54
[21:45-22:00]	10	60
[22:00-22:15]	8	55
[22:15-22:30]	13	52
[22:30-22:45]	13	53
[22:45-23:00]	16	53
[23:00-23:15]	10	47
[23:15-23:30]	11	54
[23:30-23:45]	5	55
[23:45-00:00]	8	49

Vitesse moyenne de la journée

52.03

Vitesse moyenne de la journée

53.44

Ville de Brossard

Relevé de vitesse sur le chemin des Prairies à Brossard

Annexe 2

Relevés - Type de véhicules



Type de véhicule

Jeudi

Date: 17 juin 2010
 Localisation: Chemin Des Prairies, entre les rues Ontario et Oslo
 Intervalle: 15 minutes

Direction Est

Période	Automobiles	camions légers	Camions longs	Total
[00:00-00:15]	4	0	0	4
[00:15-00:30]	2	1	0	3
[00:30-00:45]	3	1	0	4
[00:45-01:00]	6	0	0	6
[01:00-01:15]	1	0	0	1
[01:15-01:30]	2	0	0	2
[01:30-01:45]	2	0	0	2
[01:45-02:00]	1	0	0	1
[02:00-02:15]	0	0	0	0
[02:15-02:30]	1	0	0	1
[02:30-02:45]	2	0	0	2
[02:45-03:00]	1	0	0	1
[03:00-03:15]	1	0	0	1
[03:15-03:30]	2	0	0	2
[03:30-03:45]	0	0	0	0
[03:45-04:00]	2	0	0	2
[04:00-04:15]	0	0	0	0
[04:15-04:30]	0	0	0	0
[04:30-04:45]	1	0	0	1
[04:45-05:00]	0	0	0	0
[05:00-05:15]	0	0	0	0
[05:15-05:30]	3	0	0	3
[05:30-05:45]	2	0	0	2
[05:45-06:00]	2	0	0	2
[06:00-06:15]	2	1	0	3
[06:15-06:30]	8	2	0	10
[06:30-06:45]	4	0	0	4
[06:45-07:00]	11	3	0	14
[07:00-07:15]	10	2	0	12
[07:15-07:30]	17	2	0	19
[07:30-07:45]	19	1	0	20
[07:45-08:00]	16	2	0	18
[08:00-08:15]	13	4	0	17
[08:15-08:30]	15	7	1	23
[08:30-08:45]	28	5	0	33
[08:45-09:00]	15	0	0	15

Direction Ouest

Période	Automobiles	camions légers	Camions longs	Total
[00:00-00:15]	2	0	0	2
[00:15-00:30]	6	1	1	8
[00:30-00:45]	1	1	0	2
[00:45-01:00]	5	0	0	5
[01:00-01:15]	2	0	0	2
[01:15-01:30]	1	0	1	2
[01:30-01:45]	2	1	0	3
[01:45-02:00]	0	0	0	0
[02:00-02:15]	0	0	0	0
[02:15-02:30]	0	0	0	0
[02:30-02:45]	0	0	0	0
[02:45-03:00]	0	0	0	0
[03:00-03:15]	0	0	0	0
[03:15-03:30]	2	0	0	2
[03:30-03:45]	2	0	0	2
[03:45-04:00]	1	0	0	1
[04:00-04:15]	0	0	0	0
[04:15-04:30]	1	0	0	1
[04:30-04:45]	2	0	0	2
[04:45-05:00]	2	0	0	2
[05:00-05:15]	1	1	0	2
[05:15-05:30]	5	2	0	7
[05:30-05:45]	9	0	0	9
[05:45-06:00]	9	2	0	11
[06:00-06:15]	10	5	0	15
[06:15-06:30]	22	1	1	24
[06:30-06:45]	24	3	3	30
[06:45-07:00]	34	7	1	42
[07:00-07:15]	26	8	2	36
[07:15-07:30]	33	10	2	45
[07:30-07:45]	51	7	3	61
[07:45-08:00]	60	4	1	65
[08:00-08:15]	44	10	1	55
[08:15-08:30]	41	7	2	50
[08:30-08:45]	38	6	4	48
[08:45-09:00]	53	13	1	67



Type de véhicule

Jeudi

Date: 17 juin 2010
Localisation: Chemin Des Prairies, entre les rues Ontario et Oslo
Intervalle: 15 minutes

Direction Est

Période	Automobiles	camions légers	Camions longs	Total
[09:00-09:15]	14	2	0	16
[09:15-09:30]	12	2	0	14
[09:30-09:45]	12	2	0	14
[09:45-10:00]	15	1	0	16
[10:00-10:15]	19	0	0	19
[10:15-10:30]	13	2	0	15
[10:30-10:45]	19	4	0	23
[10:45-11:00]	17	0	1	18
[11:00-11:15]	17	1	1	19
[11:15-11:30]	18	2	0	20
[11:30-11:45]	18	2	1	21
[11:45-12:00]	18	2	1	21
[12:00-12:15]	22	3	0	25
[12:15-12:30]	17	3	0	20
[12:30-12:45]	29	0	0	29
[12:45-13:00]	17	3	0	20
[13:00-13:15]	20	2	1	23
[13:15-13:30]	6	2	1	9
[13:30-13:45]	24	3	0	27
[13:45-14:00]	14	0	0	14
[14:00-14:15]	21	1	1	23
[14:15-14:30]	15	3	0	18
[14:30-14:45]	18	4	0	22
[14:45-15:00]	18	1	0	19
[15:00-15:15]	13	1	0	14
[15:15-15:30]	8	0	0	8
[15:30-15:45]	8	0	0	8
[15:45-16:00]	5	0	0	5
[16:00-16:15]	14	2	1	17
[16:15-16:30]	11	2	0	13
[16:30-16:45]	12	1	0	13
[16:45-17:00]	26	4	0	30
[17:00-17:15]	38	6	0	44
[17:15-17:30]	57	4	0	61
[17:30-17:45]	52	7	0	59
[17:45-18:00]	48	2	0	50

Direction Ouest

Période	Automobiles	camions légers	Camions longs	Total
[09:00-09:15]	25	4	1	30
[09:15-09:30]	23	1	1	25
[09:30-09:45]	33	1	1	35
[09:45-10:00]	31	1	0	32
[10:00-10:15]	21	1	1	23
[10:15-10:30]	19	1	1	21
[10:30-10:45]	25	5	0	30
[10:45-11:00]	25	3	0	28
[11:00-11:15]	25	1	1	27
[11:15-11:30]	28	6	1	35
[11:30-11:45]	33	4	0	37
[11:45-12:00]	25	4	1	30
[12:00-12:15]	35	3	0	38
[12:15-12:30]	26	6	1	33
[12:30-12:45]	32	4	1	37
[12:45-13:00]	31	3	1	35
[13:00-13:15]	37	3	0	40
[13:15-13:30]	26	4	0	30
[13:30-13:45]	26	0	1	27
[13:45-14:00]	21	4	0	25
[14:00-14:15]	22	9	2	33
[14:15-14:30]	31	4	1	36
[14:30-14:45]	24	2	2	28
[14:45-15:00]	21	2	1	24
[15:00-15:15]	30	5	1	36
[15:15-15:30]	29	2	1	32
[15:30-15:45]	27	4	2	33
[15:45-16:00]	20	1	1	22
[16:00-16:15]	30	4	0	34
[16:15-16:30]	32	2	2	36
[16:30-16:45]	32	5	2	39
[16:45-17:00]	45	7	2	54
[17:00-17:15]	43	7	1	51
[17:15-17:30]	45	1	4	50
[17:30-17:45]	40	4	1	45
[17:45-18:00]	46	12	2	60



Type de véhicule

Jeudi

Date: 17 juin 2010
Localisation: Chemin Des Prairies, entre les rues Ontario et Oslo
Intervalle: 15 minutes

Direction Est

Période	Automobiles	camions légers	Camions longs	Total
[18:00-18:15]	51	2	0	53
[18:15-18:30]	45	7	0	52
[18:30-18:45]	30	1	0	31
[18:45-19:00]	40	1	1	42
[19:00-19:15]	45	2	0	47
[19:15-19:30]	38	1	0	39
[19:30-19:45]	26	4	1	31
[19:45-20:00]	38	6	0	44
[20:00-20:15]	23	4	0	27
[20:15-20:30]	29	3	0	32
[20:30-20:45]	30	0	0	30
[20:45-21:00]	20	1	0	21
[21:00-21:15]	28	3	1	32
[21:15-21:30]	23	1	0	24
[21:30-21:45]	17	1	2	20
[21:45-22:00]	15	1	1	17
[22:00-22:15]	16	1	0	17
[22:15-22:30]	11	0	0	11
[22:30-22:45]	14	1	0	15
[22:45-23:00]	9	0	0	9
[23:00-23:15]	9	0	0	9
[23:15-23:30]	5	3	0	8
[23:30-23:45]	8	0	0	8
[23:45-00:00]	5	0	0	5
Total	1476	148	15	1639

Direction Ouest

Période	Automobiles	camions légers	Camions longs	Total
[18:00-18:15]	32	4	1	37
[18:15-18:30]	57	3	2	62
[18:30-18:45]	30	4	1	35
[18:45-19:00]	42	0	1	43
[19:00-19:15]	47	1	0	48
[19:15-19:30]	30	4	0	34
[19:30-19:45]	32	3	2	37
[19:45-20:00]	39	2	0	41
[20:00-20:15]	36	2	1	39
[20:15-20:30]	22	2	0	24
[20:30-20:45]	28	2	1	31
[20:45-21:00]	37	5	1	43
[21:00-21:15]	8	0	1	9
[21:15-21:30]	46	2	1	49
[21:30-21:45]	24	2	0	26
[21:45-22:00]	17	2	0	19
[22:00-22:15]	13	1	1	15
[22:15-22:30]	18	0	1	19
[22:30-22:45]	14	2	0	16
[22:45-23:00]	12	1	0	13
[23:00-23:15]	6	1	0	7
[23:15-23:30]	8	1	1	10
[23:30-23:45]	10	0	0	10
[23:45-00:00]	3	0	0	3
Total	2164	263	75	2502



Type de véhicule

Vendredi

Date: 18 juin 2010
Localisation: Chemin Des Prairies, entre les rues Ontario et Oslo
Intervalle: 15 minutes

Direction Est

Direction Ouest

Période	Automobiles	camions légers	Camions longs	Total	Automobiles	camions légers	Camions longs	Total
[00:00-00:15]	8	0	0	8	13	1	1	15
[00:15-00:30]	2	1	0	3	4	0	2	6
[00:30-00:45]	7	0	0	7	4	0	0	4
[00:45-01:00]	5	0	0	5	2	0	0	2
[01:00-01:15]	4	1	0	5	4	1	0	5
[01:15-01:30]	1	0	0	1	1	0	1	2
[01:30-01:45]	2	0	0	2	3	0	0	3
[01:45-02:00]	3	0	0	3	2	0	0	2
[02:00-02:15]	1	0	0	1	0	0	0	0
[02:15-02:30]	1	0	0	1	1	0	0	1
[02:30-02:45]	0	0	0	0	0	0	0	0
[02:45-03:00]	1	0	0	1	2	0	0	2
[03:00-03:15]	0	0	0	0	0	0	0	0
[03:15-03:30]	0	0	0	0	0	0	0	0
[03:30-03:45]	0	0	0	0	2	0	0	2
[03:45-04:00]	0	0	0	0	3	1	0	4
[04:00-04:15]	0	0	0	0	1	0	0	1
[04:15-04:30]	0	0	0	0	2	0	0	2
[04:30-04:45]	0	0	0	0	0	0	0	0
[04:45-05:00]	0	0	0	0	2	1	0	3
[05:00-05:15]	2	0	0	2	3	0	0	3
[05:15-05:30]	3	0	0	3	3	0	0	3
[05:30-05:45]	1	0	0	1	6	1	0	7
[05:45-06:00]	1	0	0	1	14	1	0	15
[06:00-06:15]	4	0	0	4	10	2	0	12
[06:15-06:30]	4	1	0	5	14	2	2	18
[06:30-06:45]	8	1	0	9	34	3	2	39
[06:45-07:00]	8	1	0	9	35	3	2	40
[07:00-07:15]	5	1	0	6	32	3	2	37
[07:15-07:30]	14	2	1	17	46	5	3	54
[07:30-07:45]	21	2	0	23	49	7	3	59
[07:45-08:00]	14	2	0	16	62	7	2	71
[08:00-08:15]	17	3	0	20	42	3	3	48
[08:15-08:30]	22	2	0	24	50	5	3	58
[08:30-08:45]	17	3	0	20	36	5	3	44
[08:45-09:00]	12	2	1	15	33	2	0	35



Type de véhicule

Vendredi

Date: 18 juin 2010
Localisation: Chemin Des Prairies, entre les rues Ontario et Oslo
Intervalle: 15 minutes

Direction Est

Direction Ouest

Période	Automobiles	Camions		Total	Automobiles	Camions		Total
		légers	longs			légers	longs	
[09:00-09:15]	22	1	0	23	36	4	0	40
[09:15-09:30]	21	3	1	25	16	2	0	18
[09:30-09:45]	16	1	0	17	22	3	1	26
[09:45-10:00]	24	2	0	26	23	1	0	24
[10:00-10:15]	25	0	0	25	22	2	1	25
[10:15-10:30]	25	1	0	26	23	3	1	27
[10:30-10:45]	20	2	1	23	9	4	1	14
[10:45-11:00]	20	1	0	21	19	3	0	22
[11:00-11:15]	22	1	0	23	22	5	0	27
[11:15-11:30]	39	2	0	41	26	1	1	28
[11:30-11:45]	22	2	0	24	33	6	0	39
[11:45-12:00]	26	1	1	28	34	4	0	38
[12:00-12:15]	26	3	0	29	21	3	0	24
[12:15-12:30]	25	0	0	25	24	2	3	29
[12:30-12:45]	45	3	0	48	22	3	0	25
[12:45-13:00]	28	1	0	29	20	5	0	25
[13:00-13:15]	30	1	0	31	32	2	0	34
[13:15-13:30]	26	3	0	29	37	2	1	40
[13:30-13:45]	16	1	1	18	23	3	2	28
[13:45-14:00]	23	3	2	28	16	2	1	19
[14:00-14:15]	20	1	0	21	19	1	1	21
[14:15-14:30]	28	3	1	32	23	3	0	26
[14:30-14:45]	27	2	0	29	30	3	0	33
[14:45-15:00]	25	2	0	27	29	3	0	32
[15:00-15:15]	35	2	0	37	30	5	1	36
[15:15-15:30]	37	5	0	42	35	3	1	39
[15:30-15:45]	19	1	1	21	38	3	1	42
[15:45-16:00]	22	2	1	25	22	5	0	27
[16:00-16:15]	12	0	0	12	34	2	2	38
[16:15-16:30]	40	3	0	43	51	4	2	57
[16:30-16:45]	49	2	0	51	38	3	0	41
[16:45-17:00]	56	1	1	58	44	1	1	46
[17:00-17:15]	42	1	0	43	43	4	2	49
[17:15-17:30]	58	1	0	59	41	3	2	46
[17:30-17:45]	51	0	0	51	41	2	1	44
[17:45-18:00]	61	6	0	67	43	1	2	46



Type de véhicule

Vendredi

Date: 18 juin 2010
 Localisation: Chemin Des Prairies, entre les rues Ontario et Oslo
 Intervalle: 15 minutes

Direction Est

Période	Automobiles	camions légers	Camions longs	Total
[18:00-18:15]	40	3	0	43
[18:15-18:30]	48	1	0	49
[18:30-18:45]	47	3	0	50
[18:45-19:00]	43	2	0	45
[19:00-19:15]	20	0	1	21
[19:15-19:30]	36	2	1	39
[19:30-19:45]	37	3	0	40
[19:45-20:00]	48	0	0	48
[20:00-20:15]	36	1	0	37
[20:15-20:30]	30	0	0	30
[20:30-20:45]	23	2	0	25
[20:45-21:00]	15	1	0	16
[21:00-21:15]	24	0	0	24
[21:15-21:30]	28	3	0	31
[21:30-21:45]	34	1	0	35
[21:45-22:00]	28	1	0	29
[22:00-22:15]	23	1	0	24
[22:15-22:30]	9	1	0	10
[22:30-22:45]	13	1	0	14
[22:45-23:00]	8	2	0	10
[23:00-23:15]	11	0	0	11
[23:15-23:30]	15	1	0	16
[23:30-23:45]	9	1	0	10
[23:45-00:00]	12	1	0	13
Total	1908	117	14	2039

Direction Ouest

Période	Automobiles	camions légers	Camions longs	Total
[18:00-18:15]	43	1	2	46
[18:15-18:30]	38	3	2	43
[18:30-18:45]	34	1	1	36
[18:45-19:00]	37	7	1	45
[19:00-19:15]	42	1	0	43
[19:15-19:30]	23	2	0	25
[19:30-19:45]	43	3	1	47
[19:45-20:00]	33	3	0	36
[20:00-20:15]	15	0	1	16
[20:15-20:30]	33	2	0	35
[20:30-20:45]	35	3	0	38
[20:45-21:00]	37	2	1	40
[21:00-21:15]	26	2	1	29
[21:15-21:30]	22	2	0	24
[21:30-21:45]	28	1	1	30
[21:45-22:00]	28	1	0	29
[22:00-22:15]	18	2	0	20
[22:15-22:30]	23	2	1	26
[22:30-22:45]	15	0	0	15
[22:45-23:00]	13	0	0	13
[23:00-23:15]	10	0	0	10
[23:15-23:30]	14	0	1	15
[23:30-23:45]	15	0	0	15
[23:45-00:00]	13	1	1	15
Total	2194	198	71	2463



Type de véhicule

Samedi

Date: 19 juin 2010
Localisation: Chemin Des Prairies, entre les rues Ontario et Oslo
Intervalle: 15 minutes

Direction Est

Direction Ouest

Période	Automobiles	camions légers	Camions longs	Total	Automobiles	camions légers	Camions longs	Total
[00:00-00:15]	9	0	0	9	8	0	0	8
[00:15-00:30]	8	1	0	9	11	1	1	13
[00:30-00:45]	7	0	0	7	6	2	0	8
[00:45-01:00]	10	1	0	11	6	0	0	6
[01:00-01:15]	6	2	0	8	1	1	0	2
[01:15-01:30]	6	1	0	7	3	0	1	4
[01:30-01:45]	1	0	1	2	4	2	0	6
[01:45-02:00]	3	0	0	3	0	0	0	0
[02:00-02:15]	2	0	0	2	6	0	0	6
[02:15-02:30]	0	0	1	1	2	0	0	2
[02:30-02:45]	2	1	0	3	1	0	0	1
[02:45-03:00]	5	0	0	5	2	1	0	3
[03:00-03:15]	3	0	0	3	1	0	0	1
[03:15-03:30]	4	0	0	4	1	0	0	1
[03:30-03:45]	1	0	0	1	1	1	0	2
[03:45-04:00]	0	0	0	0	1	0	0	1
[04:00-04:15]	2	0	0	2	0	0	0	0
[04:15-04:30]	0	0	0	0	0	0	0	0
[04:30-04:45]	1	0	0	1	1	0	0	1
[04:45-05:00]	0	0	0	0	0	0	0	0
[05:00-05:15]	2	0	0	2	2	0	0	2
[05:15-05:30]	1	0	0	1	4	0	0	4
[05:30-05:45]	2	0	0	2	4	1	0	5
[05:45-06:00]	1	0	0	1	2	0	0	2
[06:00-06:15]	2	1	0	3	3	1	0	4
[06:15-06:30]	0	1	0	1	3	0	0	3
[06:30-06:45]	6	0	0	6	5	1	1	7
[06:45-07:00]	5	0	0	5	5	0	0	5
[07:00-07:15]	4	0	0	4	7	1	0	8
[07:15-07:30]	9	1	0	10	16	0	1	17
[07:30-07:45]	12	1	0	13	6	1	0	7
[07:45-08:00]	9	1	0	10	7	1	0	8
[08:00-08:15]	9	0	0	9	14	0	1	15
[08:15-08:30]	20	2	0	22	11	1	1	13
[08:30-08:45]	18	0	0	18	19	4	0	23
[08:45-09:00]	19	7	1	27	24	4	0	28



Type de véhicule

Samedi

Date: 19 juin 2010
 Localisation: Chemin Des Prairies, entre les rues Ontario et Oslo
 Intervalle: 15 minutes

Direction Est

Période	Automobiles	camions légers	Camions longs	Total
[09:00-09:15]	21	2	0	23
[09:15-09:30]	16	1	0	17
[09:30-09:45]	30	1	0	31
[09:45-10:00]	33	4	0	37
[10:00-10:15]	31	7	0	38
[10:15-10:30]	27	1	0	28
[10:30-10:45]	35	1	0	36
[10:45-11:00]	41	0	0	41
[11:00-11:15]	38	5	0	43
[11:15-11:30]	43	4	0	47
[11:30-11:45]	44	4	0	48
[11:45-12:00]	44	3	0	47
[12:00-12:15]	34	1	0	35
[12:15-12:30]	34	0	0	34
[12:30-12:45]	29	5	0	34
[12:45-13:00]	42	0	0	42
[13:00-13:15]	39	0	0	39
[13:15-13:30]	43	2	0	45
[13:30-13:45]	40	1	0	41
[13:45-14:00]	40	2	0	42
[14:00-14:15]	44	3	0	47
[14:15-14:30]	47	0	0	47
[14:30-14:45]	42	2	0	44
[14:45-15:00]	34	2	0	36
[15:00-15:15]	39	1	0	40
[15:15-15:30]	50	2	0	52
[15:30-15:45]	44	2	0	46
[15:45-16:00]	50	3	0	53
[16:00-16:15]	40	4	0	44
[16:15-16:30]	38	1	0	39
[16:30-16:45]	37	2	1	40
[16:45-17:00]	32	0	0	32
[17:00-17:15]	34	2	0	36
[17:15-17:30]	20	2	0	22
[17:30-17:45]	31	5	0	36
[17:45-18:00]	18	0	0	18

Direction Ouest

Période	Automobiles	camions légers	Camions longs	Total
[09:00-09:15]	31	3	0	34
[09:15-09:30]	26	7	1	34
[09:30-09:45]	23	2	0	25
[09:45-10:00]	29	7	0	36
[10:00-10:15]	30	4	0	34
[10:15-10:30]	41	3	1	45
[10:30-10:45]	48	1	0	49
[10:45-11:00]	37	6	0	43
[11:00-11:15]	35	6	0	41
[11:15-11:30]	57	5	1	63
[11:30-11:45]	42	4	0	46
[11:45-12:00]	42	2	0	44
[12:00-12:15]	41	6	1	48
[12:15-12:30]	30	4	1	35
[12:30-12:45]	50	1	0	51
[12:45-13:00]	38	5	1	44
[13:00-13:15]	42	8	0	50
[13:15-13:30]	34	4	1	39
[13:30-13:45]	32	6	0	38
[13:45-14:00]	52	2	0	54
[14:00-14:15]	54	3	0	57
[14:15-14:30]	44	2	2	48
[14:30-14:45]	35	2	1	38
[14:45-15:00]	56	2	2	60
[15:00-15:15]	37	4	1	42
[15:15-15:30]	49	1	1	51
[15:30-15:45]	38	4	1	43
[15:45-16:00]	44	6	0	50
[16:00-16:15]	52	3	1	56
[16:15-16:30]	60	2	1	63
[16:30-16:45]	39	3	0	42
[16:45-17:00]	51	3	1	55
[17:00-17:15]	54	1	1	56
[17:15-17:30]	44	5	2	51
[17:30-17:45]	28	2	0	30
[17:45-18:00]	12	1	0	13



Type de véhicule

Samedi

Date: 19 juin 2010
Localisation: Chemin Des Prairies, entre les rues Ontario et Oslo
Intervalle: 15 minutes

Direction Est

Période	Automobiles	camions légers	Camions longs	Total
[18:00-18:15]	20	0	0	20
[18:15-18:30]	22	1	0	23
[18:30-18:45]	31	2	0	33
[18:45-19:00]	21	1	0	22
[19:00-19:15]	25	1	0	26
[19:15-19:30]	16	1	0	17
[19:30-19:45]	17	2	0	19
[19:45-20:00]	14	2	1	17
[20:00-20:15]	10	2	0	12
[20:15-20:30]	10	3	1	14
[20:30-20:45]	8	0	0	8
[20:45-21:00]	24	1	0	25
[21:00-21:15]	10	0	0	10
[21:15-21:30]	10	3	0	13
[21:30-21:45]	12	1	0	13
[21:45-22:00]	8	1	0	9
[22:00-22:15]	11	0	0	11
[22:15-22:30]	10	1	0	11
[22:30-22:45]	12	2	1	15
[22:45-23:00]	13	1	0	14
[23:00-23:15]	8	1	0	9
[23:15-23:30]	11	0	0	11
[23:30-23:45]	16	0	0	16
[23:45-00:00]	10	1	0	11
Total	1842	122	7	1971

Direction Ouest

Période	Automobiles	camions légers	Camions longs	Total
[18:00-18:15]	24	2	0	26
[18:15-18:30]	32	0	0	32
[18:30-18:45]	28	0	1	29
[18:45-19:00]	21	1	0	22
[19:00-19:15]	26	2	1	29
[19:15-19:30]	25	1	1	27
[19:30-19:45]	24	0	0	24
[19:45-20:00]	13	1	0	14
[20:00-20:15]	19	1	0	20
[20:15-20:30]	15	2	2	19
[20:30-20:45]	14	0	0	14
[20:45-21:00]	13	0	0	13
[21:00-21:15]	24	0	0	24
[21:15-21:30]	14	3	1	18
[21:30-21:45]	27	2	0	29
[21:45-22:00]	12	1	0	13
[22:00-22:15]	14	0	0	14
[22:15-22:30]	8	1	1	10
[22:30-22:45]	9	3	0	12
[22:45-23:00]	9	1	1	11
[23:00-23:15]	10	4	0	14
[23:15-23:30]	10	1	1	12
[23:30-23:45]	10	0	0	10
[23:45-00:00]	17	1	1	19
Total	2062	180	37	2279



Type de véhicule

Dimanche

Date: 20 juin 2010
Localisation: Chemin Des Prairies, entre les rues Ontario et Oslo
Intervalle: 15 minutes

Direction Est

Direction Ouest

Période	Automobiles	camions légers	Camions longs	Total
[09:00-09:15]	15	2	1	18
[09:15-09:30]	22	0	0	22
[09:30-09:45]	26	3	0	29
[09:45-10:00]	23	2	0	25
[10:00-10:15]	33	3	0	36
[10:15-10:30]	23	1	1	25
[10:30-10:45]	30	1	0	31
[10:45-11:00]	36	1	0	37
[11:00-11:15]	31	0	0	31
[11:15-11:30]	33	3	1	37
[11:30-11:45]	30	2	1	33
[11:45-12:00]	32	1	0	33
[12:00-12:15]	35	0	0	35
[12:15-12:30]	27	1	0	28
[12:30-12:45]	25	4	0	29
[12:45-13:00]	24	4	0	28
[13:00-13:15]	35	0	0	35
[13:15-13:30]	31	3	0	34
[13:30-13:45]	23	4	0	27
[13:45-14:00]	27	4	1	32
[14:00-14:15]	21	3	0	24
[14:15-14:30]	25	3	1	29
[14:30-14:45]	22	4	1	27
[14:45-15:00]	32	4	2	38
[15:00-15:15]	26	3	0	29
[15:15-15:30]	38	2	0	40
[15:30-15:45]	30	3	1	34
[15:45-16:00]	33	4	0	37
[16:00-16:15]	24	3	2	29
[16:15-16:30]	23	1	0	24
[16:30-16:45]	18	6	0	24
[16:45-17:00]	26	2	0	28
[17:00-17:15]	27	2	0	29
[17:15-17:30]	30	1	0	31
[17:30-17:45]	15	0	0	15
[17:45-18:00]	31	2	0	33

Automobiles	camions légers	Camions longs	Total
15	1	0	16
29	3	1	33
24	1	0	25
24	2	0	26
31	3	0	34
36	6	1	43
46	2	0	48
41	4	1	46
35	3	0	38
35	2	1	38
35	5	0	40
55	3	0	58
43	1	1	45
30	5	2	37
45	5	0	50
37	3	0	40
41	0	0	41
40	0	1	41
30	3	0	33
40	3	0	43
43	0	1	44
37	3	1	41
30	4	0	34
36	2	0	38
44	1	0	45
44	5	0	49
41	1	0	42
49	2	0	51
50	5	0	55
46	3	1	50
53	4	1	58
55	2	1	58
56	3	0	59
43	2	1	46
33	2	1	36
34	3	1	38



Type de véhicule

Dimanche

Date: 20 juin 2010
Localisation: Chemin Des Prairies, entre les rues Ontario et Oslo
Intervalle: 15 minutes

Direction Est

Période	Automobiles	camions légers	Camions longs	Total
[18:00-18:15]	27	0	0	27
[18:15-18:30]	24	1	0	25
[18:30-18:45]	16	1	0	17
[18:45-19:00]	21	0	0	21
[19:00-19:15]	16	0	0	16
[19:15-19:30]	18	2	0	20
[19:30-19:45]	13	0	0	13
[19:45-20:00]	11	0	0	11
[20:00-20:15]	16	0	0	16
[20:15-20:30]	19	4	0	23
[20:30-20:45]	16	3	0	19
[20:45-21:00]	13	1	0	14
[21:00-21:15]	18	0	0	18
[21:15-21:30]	21	0	1	22
[21:30-21:45]	14	0	0	14
[21:45-22:00]	17	2	0	19
[22:00-22:15]	24	1	0	25
[22:15-22:30]	17	0	0	17
[22:30-22:45]	15	0	0	15
[22:45-23:00]	11	2	0	13
[23:00-23:15]	9	0	1	10
[23:15-23:30]	8	1	0	9
[23:30-23:45]	10	1	1	12
[23:45-00:00]	6	0	0	6
Total	1489	108	19	1616

Direction Ouest

Période	Automobiles	camions légers	Camions longs	Total
[18:00-18:15]	31	0	0	31
[18:15-18:30]	25	1	0	26
[18:30-18:45]	35	5	0	40
[18:45-19:00]	28	2	0	30
[19:00-19:15]	22	1	0	23
[19:15-19:30]	15	0	1	16
[19:30-19:45]	15	0	0	15
[19:45-20:00]	16	1	0	17
[20:00-20:15]	7	1	0	8
[20:15-20:30]	17	1	1	19
[20:30-20:45]	16	0	0	16
[20:45-21:00]	17	1	0	18
[21:00-21:15]	17	2	0	19
[21:15-21:30]	17	2	1	20
[21:30-21:45]	14	1	0	15
[21:45-22:00]	9	1	0	10
[22:00-22:15]	7	1	0	8
[22:15-22:30]	11	0	2	13
[22:30-22:45]	9	2	1	12
[22:45-23:00]	15	1	0	16
[23:00-23:15]	9	1	0	10
[23:15-23:30]	10	0	1	11
[23:30-23:45]	3	2	0	5
[23:45-00:00]	5	2	0	7
Total	1929	137	27	2093

Ville de Brossard

Relevé de vitesse sur le chemin des Prairies à Brossard

Annexe 3

Relevés - Données brutes

Time/Class Report

HI-Star ID: 9058
 Street: des Prairies
 State: Qc
 City: Brossard
 County: Canada

Begin: juin-16-10 23:00
 Lane: dir ouest Ontari
 Oper: OOO
 Posted: 50
 AADT Factor: 1

End: juin-21-10 00:15
 Hours: 97,25
 Period: 15
 Raw Count: 9520
 AADT Count: 2 349

Date	<	6,4	8,5	12,2	15,2	18,3	21,3	29,9	FN	MF
And	to	to	to	to	to	to	to	to		
Time Range	6,3	8,4	12,1	15,1	18,2	21,2	29,8	>		
mer.,juin-16-10										
[23:00-23:15]	7	0	0	0	0	0	0	0		7
[23:15-23:30]	6	2	0	1	0	0	0	0		9
[23:30-23:45]	7	0	0	0	0	0	0	0		7
[23:45-00:00]	3	0	0	0	0	0	0	0		3
	23	2	0	1	0	0	0	0		26
jeu.,juin-17-10										
[00:00-00:15]	2	0	0	0	0	0	0	0		2
[00:15-00:30]	6	1	0	1	0	0	0	0		8
[00:30-00:45]	1	1	0	0	0	0	0	0		2
[00:45-01:00]	5	0	0	0	0	0	0	0		5
	14	2	0	1	0	0	0	0		17
[01:00-01:15]	2	0	0	0	0	0	0	0		2
[01:15-01:30]	1	0	0	1	0	0	0	0		2
[01:30-01:45]	2	0	1	0	0	0	0	0		3
[01:45-02:00]	0	0	0	0	0	0	0	0		0
	5	0	1	1	0	0	0	0		7
[02:00-02:15]	0	0	0	0	0	0	0	0		0
[02:15-02:30]	0	0	0	0	0	0	0	0		0
[02:30-02:45]	0	0	0	0	0	0	0	0		0
[02:45-03:00]	0	0	0	0	0	0	0	0		0
	0	0	0	0	0	0	0	0		0
[03:00-03:15]	0	0	0	0	0	0	0	0		0
[03:15-03:30]	2	0	0	0	0	0	0	0		2
[03:30-03:45]	2	0	0	0	0	0	0	0		2
[03:45-04:00]	1	0	0	0	0	0	0	0		1
	5	0	0	0	0	0	0	0		5
[04:00-04:15]	0	0	0	0	0	0	0	0		0
[04:15-04:30]	1	0	0	0	0	0	0	0		1
[04:30-04:45]	2	0	0	0	0	0	0	0		2
[04:45-05:00]	2	0	0	0	0	0	0	0		2
	5	0	0	0	0	0	0	0		5
[05:00-05:15]	1	0	1	0	0	0	0	0		2
[05:15-05:30]	5	2	0	0	0	0	0	0		7
[05:30-05:45]	9	0	0	0	0	0	0	0		9
[05:45-06:00]	9	2	0	0	0	0	0	0		11
	24	4	1	0	0	0	0	0		29
[06:00-06:15]	10	3	2	0	0	0	0	0		15
[06:15-06:30]	22	0	1	1	0	0	0	0		24
[06:30-06:45]	24	3	0	3	0	0	0	0		30
[06:45-07:00]	34	5	2	1	0	0	0	0		42

Time/Class Report

HI-Star ID: 9058
 Street: des Prairies
 State: Qc
 City: Brossard
 County: Canada

Begin: juin-16-10 23:00
 Lane: dir ouest Ontari
 Oper: OOO
 Posted: 50
 AADT Factor: 1

End: juin-21-10 00:15
 Hours: 97,25
 Period: 15
 Raw Count: 9520
 AADT Count: 2 349

Date	<	6,4	8,5	12,2	15,2	18,3	21,3	29,9	FN	MF
And	to	to	to	to	to	to	to	to		
Time Range	6,3	8,4	12,1	15,1	18,2	21,2	29,8	>		
	90	11	5	5	0	0	0	0		111
jeu.,juin-17-10										
[07:00-07:15]	26	4	4	2	0	0	0	0		36
[07:15-07:30]	33	8	2	2	0	0	0	0		45
[07:30-07:45]	51	4	3	3	0	0	0	0		61
[07:45-08:00]	60	2	2	1	0	0	0	0		65
	170	18	11	8	0	0	0	0		207
[08:00-08:15]	44	7	3	1	0	0	0	0		55
[08:15-08:30]	41	6	1	2	0	0	0	0		50
[08:30-08:45]	38	5	1	2	1	0	1	0		48
[08:45-09:00]	53	10	3	1	0	0	0	0		67
	176	28	8	6	1	0	1	0		220
[09:00-09:15]	25	1	3	1	0	0	0	0		30
[09:15-09:30]	23	1	0	1	0	0	0	0		25
[09:30-09:45]	33	0	1	1	0	0	0	0		35
[09:45-10:00]	31	1	0	0	0	0	0	0		32
	112	3	4	3	0	0	0	0		122
[10:00-10:15]	21	1	0	1	0	0	0	0		23
[10:15-10:30]	19	0	1	1	0	0	0	0		21
[10:30-10:45]	25	4	1	0	0	0	0	0		30
[10:45-11:00]	25	2	1	0	0	0	0	0		28
	90	7	3	2	0	0	0	0		102
[11:00-11:15]	25	1	0	1	0	0	0	0		27
[11:15-11:30]	28	4	2	1	0	0	0	0		35
[11:30-11:45]	33	3	1	0	0	0	0	0		37
[11:45-12:00]	25	3	1	1	0	0	0	0		30
	111	11	4	3	0	0	0	0		129
[12:00-12:15]	35	2	1	0	0	0	0	0		38
[12:15-12:30]	26	6	0	1	0	0	0	0		33
[12:30-12:45]	32	4	0	0	1	0	0	0		37
[12:45-13:00]	31	3	0	1	0	0	0	0		35
	124	15	1	2	1	0	0	0		143
[13:00-13:15]	37	3	0	0	0	0	0	0		40
[13:15-13:30]	26	3	1	0	0	0	0	0		30
[13:30-13:45]	26	0	0	1	0	0	0	0		27
[13:45-14:00]	21	3	1	0	0	0	0	0		25
	110	9	2	1	0	0	0	0		122
[14:00-14:15]	22	8	1	0	1	1	0	0		33
[14:15-14:30]	31	3	1	1	0	0	0	0		36
[14:30-14:45]	24	1	1	2	0	0	0	0		28
[14:45-15:00]	21	2	0	1	0	0	0	0		24

Time/Class Report

HI-Star ID: 9058
 Street: des Prairies
 State: Qc
 City: Brossard
 County: Canada

Begin: juin-16-10 23:00
 Lane: dir ouest Ontari
 Oper: OOO
 Posted: 50
 AADT Factor: 1

End: juin-21-10 00:15
 Hours: 97,25
 Period: 15
 Raw Count: 9520
 AADT Count: 2 349

Date	<	6,4	8,5	12,2	15,2	18,3	21,3	29,9	FN	MF
And	to	to	to	to	to	to	to	to		
Time Range	6,3	8,4	12,1	15,1	18,2	21,2	29,8	>		
	57	4	0	2	0	0	0	0		63
[23:00-23:15]	6	1	0	0	0	0	0	0		7
[23:15-23:30]	8	1	0	1	0	0	0	0		10
jeu.,juin-17-10										
[23:30-23:45]	10	0	0	0	0	0	0	0		10
[23:45-00:00]	3	0	0	0	0	0	0	0		3
	27	2	0	1	0	0	0	0		30
ven.,juin-18-10										
[00:00-00:15]	13	1	0	0	1	0	0	0		15
[00:15-00:30]	4	0	0	1	0	1	0	0		6
[00:30-00:45]	4	0	0	0	0	0	0	0		4
[00:45-01:00]	2	0	0	0	0	0	0	0		2
	23	1	0	1	1	1	0	0		27
[01:00-01:15]	4	1	0	0	0	0	0	0		5
[01:15-01:30]	1	0	0	1	0	0	0	0		2
[01:30-01:45]	3	0	0	0	0	0	0	0		3
[01:45-02:00]	2	0	0	0	0	0	0	0		2
	10	1	0	1	0	0	0	0		12
[02:00-02:15]	0	0	0	0	0	0	0	0		0
[02:15-02:30]	1	0	0	0	0	0	0	0		1
[02:30-02:45]	0	0	0	0	0	0	0	0		0
[02:45-03:00]	2	0	0	0	0	0	0	0		2
	3	0	0	0	0	0	0	0		3
[03:00-03:15]	0	0	0	0	0	0	0	0		0
[03:15-03:30]	0	0	0	0	0	0	0	0		0
[03:30-03:45]	2	0	0	0	0	0	0	0		2
[03:45-04:00]	3	1	0	0	0	0	0	0		4
	5	1	0	0	0	0	0	0		6
[04:00-04:15]	1	0	0	0	0	0	0	0		1
[04:15-04:30]	2	0	0	0	0	0	0	0		2
[04:30-04:45]	0	0	0	0	0	0	0	0		0
[04:45-05:00]	2	1	0	0	0	0	0	0		3
	5	1	0	0	0	0	0	0		6
[05:00-05:15]	3	0	0	0	0	0	0	0		3
[05:15-05:30]	3	0	0	0	0	0	0	0		3
[05:30-05:45]	6	0	1	0	0	0	0	0		7
[05:45-06:00]	14	1	0	0	0	0	0	0		15
	26	1	1	0	0	0	0	0		28
[06:00-06:15]	10	2	0	0	0	0	0	0		12
[06:15-06:30]	14	1	1	2	0	0	0	0		18
[06:30-06:45]	34	2	1	2	0	0	0	0		39

Time/Class Report

HI-Star ID: 9058
 Street: des Prairies
 State: Qc
 City: Brossard
 County: Canada

Begin: juin-16-10 23:00
 Lane: dir ouest Ontari
 Oper: OOO
 Posted: 50
 AADT Factor: 1

End: juin-21-10 00:15
 Hours: 97,25
 Period: 15
 Raw Count: 9520
 AADT Count: 2 349

Date	<	6,4	8,5	12,2	15,2	18,3	21,3	29,9	FN	MF
And	to	to	to	to	to	to	to	to		
Time Range	6,3	8,4	12,1	15,1	18,2	21,2	29,8	>		
[06:45-07:00]	35	3	0	2	0	0	0	0		40
	93	8	2	6	0	0	0	0		109
[07:00-07:15]	32	2	1	2	0	0	0	0		37
[07:15-07:30]	46	4	1	3	0	0	0	0		54
ven.,juin-18-10										
[07:30-07:45]	49	6	1	2	1	0	0	0		59
[07:45-08:00]	62	5	2	2	0	0	0	0		71
	189	17	5	9	1	0	0	0		221
[08:00-08:15]	42	2	1	3	0	0	0	0		48
[08:15-08:30]	50	3	2	2	1	0	0	0		58
[08:30-08:45]	36	5	0	2	1	0	0	0		44
[08:45-09:00]	33	1	1	0	0	0	0	0		35
	161	11	4	7	2	0	0	0		185
[09:00-09:15]	36	2	2	0	0	0	0	0		40
[09:15-09:30]	16	1	1	0	0	0	0	0		18
[09:30-09:45]	22	3	0	1	0	0	0	0		26
[09:45-10:00]	23	0	1	0	0	0	0	0		24
	97	6	4	1	0	0	0	0		108
[10:00-10:15]	22	1	1	1	0	0	0	0		25
[10:15-10:30]	23	3	0	1	0	0	0	0		27
[10:30-10:45]	9	3	1	1	0	0	0	0		14
[10:45-11:00]	19	2	1	0	0	0	0	0		22
	73	9	3	3	0	0	0	0		88
[11:00-11:15]	22	4	1	0	0	0	0	0		27
[11:15-11:30]	26	1	0	0	0	1	0	0		28
[11:30-11:45]	33	5	1	0	0	0	0	0		39
[11:45-12:00]	34	2	2	0	0	0	0	0		38
	115	12	4	0	0	1	0	0		132
[12:00-12:15]	21	3	0	0	0	0	0	0		24
[12:15-12:30]	24	1	1	3	0	0	0	0		29
[12:30-12:45]	22	3	0	0	0	0	0	0		25
[12:45-13:00]	20	4	1	0	0	0	0	0		25
	87	11	2	3	0	0	0	0		103
[13:00-13:15]	32	1	1	0	0	0	0	0		34
[13:15-13:30]	37	2	0	1	0	0	0	0		40
[13:30-13:45]	23	2	1	1	1	0	0	0		28
[13:45-14:00]	16	0	2	1	0	0	0	0		19
	108	5	4	3	1	0	0	0		121
[14:00-14:15]	19	1	0	1	0	0	0	0		21
[14:15-14:30]	23	2	1	0	0	0	0	0		26
[14:30-14:45]	30	1	2	0	0	0	0	0		33

Time/Class Report

HI-Star ID: 9058
 Street: des Prairies
 State: Qc
 City: Brossard
 County: Canada

Begin: juin-16-10 23:00
 Lane: dir ouest Ontari
 Oper: OOO
 Posted: 50
 AADT Factor: 1

End: juin-21-10 00:15
 Hours: 97,25
 Period: 15
 Raw Count: 9520
 AADT Count: 2 349

Date	<	6,4	8,5	12,2	15,2	18,3	21,3	29,9	FN	MF
And	to	to	to	to	to	to	to	to		
Time Range	6,3	8,4	12,1	15,1	18,2	21,2	29,8	>		
[06:30-06:45]	5	1	0	0	0	0	1	0		7
[06:45-07:00]	5	0	0	0	0	0	0	0		5
	16	2	0	0	0	0	1	0		19
[07:00-07:15]	7	1	0	0	0	0	0	0		8
[07:15-07:30]	16	0	0	1	0	0	0	0		17
[07:30-07:45]	6	1	0	0	0	0	0	0		7
[07:45-08:00]	7	1	0	0	0	0	0	0		8
sam.,juin-19-10										
	36	3	0	1	0	0	0	0		40
[08:00-08:15]	14	0	0	1	0	0	0	0		15
[08:15-08:30]	11	1	0	0	1	0	0	0		13
[08:30-08:45]	19	3	1	0	0	0	0	0		23
[08:45-09:00]	24	3	1	0	0	0	0	0		28
	68	7	2	1	1	0	0	0		79
[09:00-09:15]	31	1	2	0	0	0	0	0		34
[09:15-09:30]	26	4	3	1	0	0	0	0		34
[09:30-09:45]	23	2	0	0	0	0	0	0		25
[09:45-10:00]	29	7	0	0	0	0	0	0		36
	109	14	5	1	0	0	0	0		129
[10:00-10:15]	30	3	1	0	0	0	0	0		34
[10:15-10:30]	41	2	1	1	0	0	0	0		45
[10:30-10:45]	48	1	0	0	0	0	0	0		49
[10:45-11:00]	37	4	2	0	0	0	0	0		43
	156	10	4	1	0	0	0	0		171
[11:00-11:15]	35	4	2	0	0	0	0	0		41
[11:15-11:30]	57	4	1	1	0	0	0	0		63
[11:30-11:45]	42	4	0	0	0	0	0	0		46
[11:45-12:00]	42	2	0	0	0	0	0	0		44
	176	14	3	1	0	0	0	0		194
[12:00-12:15]	41	5	1	0	1	0	0	0		48
[12:15-12:30]	30	3	1	1	0	0	0	0		35
[12:30-12:45]	50	1	0	0	0	0	0	0		51
[12:45-13:00]	38	4	1	1	0	0	0	0		44
	159	13	3	2	1	0	0	0		178
[13:00-13:15]	42	7	1	0	0	0	0	0		50
[13:15-13:30]	34	4	0	1	0	0	0	0		39
[13:30-13:45]	32	3	3	0	0	0	0	0		38
[13:45-14:00]	52	1	1	0	0	0	0	0		54
	160	15	5	1	0	0	0	0		181
[14:00-14:15]	54	2	1	0	0	0	0	0		57
[14:15-14:30]	44	2	0	2	0	0	0	0		48

Time/Class Report

HI-Star ID: 9058
 Street: des Prairies
 State: Qc
 City: Brossard
 County: Canada

Begin: juin-16-10 23:00
 Lane: dir ouest Ontari
 Oper: OOO
 Posted: 50
 AADT Factor: 1

End: juin-21-10 00:15
 Hours: 97,25
 Period: 15
 Raw Count: 9520
 AADT Count: 2 349

Date	<	6,4	8,5	12,2	15,2	18,3	21,3	29,9	FN	MF
And	to	to	to	to	to	to	to	to		
Time Range	6,3	8,4	12,1	15,1	18,2	21,2	29,8	>		
[14:30-14:45]	35	2	0	0	0	1	0	0		38
[14:45-15:00]	56	2	0	1	1	0	0	0		60
	189	8	1	3	1	1	0	0		203
[15:00-15:15]	37	3	1	1	0	0	0	0		42
[15:15-15:30]	49	0	1	1	0	0	0	0		51
[15:30-15:45]	38	4	0	1	0	0	0	0		43
[15:45-16:00]	44	6	0	0	0	0	0	0		50
sam.,juin-19-10										
	168	13	2	3	0	0	0	0		186
[16:00-16:15]	52	3	0	1	0	0	0	0		56
[16:15-16:30]	60	2	0	1	0	0	0	0		63
[16:30-16:45]	39	3	0	0	0	0	0	0		42
[16:45-17:00]	51	2	1	0	0	1	0	0		55
	202	10	1	2	0	1	0	0		216
[17:00-17:15]	54	1	0	0	1	0	0	0		56
[17:15-17:30]	44	5	0	2	0	0	0	0		51
[17:30-17:45]	28	1	1	0	0	0	0	0		30
[17:45-18:00]	12	1	0	0	0	0	0	0		13
	138	8	1	2	1	0	0	0		150
[18:00-18:15]	24	1	1	0	0	0	0	0		26
[18:15-18:30]	32	0	0	0	0	0	0	0		32
[18:30-18:45]	28	0	0	1	0	0	0	0		29
[18:45-19:00]	21	0	1	0	0	0	0	0		22
	105	1	2	1	0	0	0	0		109
[19:00-19:15]	26	1	1	1	0	0	0	0		29
[19:15-19:30]	25	1	0	1	0	0	0	0		27
[19:30-19:45]	24	0	0	0	0	0	0	0		24
[19:45-20:00]	13	0	1	0	0	0	0	0		14
	88	2	2	2	0	0	0	0		94
[20:00-20:15]	19	1	0	0	0	0	0	0		20
[20:15-20:30]	15	2	0	1	0	1	0	0		19
[20:30-20:45]	14	0	0	0	0	0	0	0		14
[20:45-21:00]	13	0	0	0	0	0	0	0		13
	61	3	0	1	0	1	0	0		66
[21:00-21:15]	24	0	0	0	0	0	0	0		24
[21:15-21:30]	14	2	1	1	0	0	0	0		18
[21:30-21:45]	27	2	0	0	0	0	0	0		29
[21:45-22:00]	12	1	0	0	0	0	0	0		13
	77	5	1	1	0	0	0	0		84
[22:00-22:15]	14	0	0	0	0	0	0	0		14
[22:15-22:30]	8	0	1	1	0	0	0	0		10

Time/Class Report

HI-Star ID: 9058
 Street: des Prairies
 State: Qc
 City: Brossard
 County: Canada

Begin: juin-16-10 23:00
 Lane: dir ouest Ontari
 Oper: OOO
 Posted: 50
 AADT Factor: 1

End: juin-21-10 00:15
 Hours: 97,25
 Period: 15
 Raw Count: 9520
 AADT Count: 2 349

Date	<	6,4	8,5	12,2	15,2	18,3	21,3	29,9	FN	MF
And	to	to	to	to	to	to	to	to		
Time Range	6,3	8,4	12,1	15,1	18,2	21,2	29,8	>		
[22:30-22:45]	9	3	0	0	0	0	0	0		12
[22:45-23:00]	9	1	0	1	0	0	0	0		11
	40	4	1	2	0	0	0	0		47
[23:00-23:15]	10	4	0	0	0	0	0	0		14
[23:15-23:30]	10	1	0	1	0	0	0	0		12
[23:30-23:45]	10	0	0	0	0	0	0	0		10
[23:45-00:00]	17	1	0	0	0	0	1	0		19
sam.,juin-19-10										
	47	6	0	1	0	0	1	0		55
dim.,juin-20-10										
[00:00-00:15]	11	1	0	0	0	0	0	0		12
[00:15-00:30]	7	1	0	1	0	0	0	0		9
[00:30-00:45]	7	2	0	0	0	0	0	0		9
[00:45-01:00]	8	0	0	0	0	0	0	0		8
	33	4	0	1	0	0	0	0		38
[01:00-01:15]	2	0	0	0	0	0	0	0		2
[01:15-01:30]	2	0	0	1	0	0	0	0		3
[01:30-01:45]	4	0	0	0	0	0	0	0		4
[01:45-02:00]	2	0	0	0	0	0	0	0		2
	10	0	0	1	0	0	0	0		11
[02:00-02:15]	3	0	0	0	0	0	0	0		3
[02:15-02:30]	5	0	0	0	0	0	0	0		5
[02:30-02:45]	1	0	0	0	0	0	0	0		1
[02:45-03:00]	3	0	0	0	0	0	0	0		3
	12	0	0	0	0	0	0	0		12
[03:00-03:15]	3	0	1	0	0	0	0	0		4
[03:15-03:30]	3	0	0	0	0	0	0	0		3
[03:30-03:45]	6	0	0	0	0	0	0	0		6
[03:45-04:00]	1	0	0	0	0	0	0	0		1
	13	0	1	0	0	0	0	0		14
[04:00-04:15]	1	0	0	0	0	0	0	0		1
[04:15-04:30]	2	0	1	0	0	0	0	0		3
[04:30-04:45]	1	0	0	0	0	0	0	0		1
[04:45-05:00]	1	0	0	0	0	0	0	0		1
	5	0	1	0	0	0	0	0		6
[05:00-05:15]	2	0	0	0	0	0	0	0		2
[05:15-05:30]	1	1	0	0	0	0	0	0		2
[05:30-05:45]	0	0	0	0	0	0	0	0		0
[05:45-06:00]	2	0	0	0	0	0	0	0		2
	5	1	0	0	0	0	0	0		6
[06:00-06:15]	4	0	1	0	0	0	0	0		5

Time/Class Report

HI-Star ID: 9058
 Street: des Prairies
 State: Qc
 City: Brossard
 County: Canada

Begin: juin-16-10 23:00
 Lane: dir ouest Ontari
 Oper: OOO
 Posted: 50
 AADT Factor: 1

End: juin-21-10 00:15
 Hours: 97,25
 Period: 15
 Raw Count: 9520
 AADT Count: 2 349

Date	<	6,4	8,5	12,2	15,2	18,3	21,3	29,9	FN	MF
And	to	to	to	to	to	to	to	to		
Time Range	6,3	8,4	12,1	15,1	18,2	21,2	29,8	>		
[06:15-06:30]	1	0	0	0	0	0	0	0		1
[06:30-06:45]	4	0	0	0	0	0	0	0		4
[06:45-07:00]	6	1	0	0	0	0	0	0		7
	15	1	1	0	0	0	0	0		17
[07:00-07:15]	3	0	0	0	0	0	0	0		3
[07:15-07:30]	4	0	1	1	0	0	0	0		6
[07:30-07:45]	3	0	0	0	0	0	0	0		3
[07:45-08:00]	7	0	0	0	0	0	0	0		7
dim.,juin-20-10										
	17	0	1	1	0	0	0	0		19
[08:00-08:15]	5	0	0	0	0	0	0	0		5
[08:15-08:30]	11	0	0	1	0	0	0	0		12
[08:30-08:45]	11	1	0	0	0	0	0	0		12
[08:45-09:00]	16	1	0	0	0	0	0	0		17
	43	2	0	1	0	0	0	0		46
[09:00-09:15]	15	1	0	0	0	0	0	0		16
[09:15-09:30]	29	3	0	1	0	0	0	0		33
[09:30-09:45]	24	1	0	0	0	0	0	0		25
[09:45-10:00]	24	2	0	0	0	0	0	0		26
	92	7	0	1	0	0	0	0		100
[10:00-10:15]	31	2	1	0	0	0	0	0		34
[10:15-10:30]	36	5	1	1	0	0	0	0		43
[10:30-10:45]	46	2	0	0	0	0	0	0		48
[10:45-11:00]	41	4	0	1	0	0	0	0		46
	154	13	2	2	0	0	0	0		171
[11:00-11:15]	35	2	1	0	0	0	0	0		38
[11:15-11:30]	35	2	0	1	0	0	0	0		38
[11:30-11:45]	35	4	1	0	0	0	0	0		40
[11:45-12:00]	55	3	0	0	0	0	0	0		58
	160	11	2	1	0	0	0	0		174
[12:00-12:15]	43	1	0	1	0	0	0	0		45
[12:15-12:30]	30	5	0	1	1	0	0	0		37
[12:30-12:45]	45	3	2	0	0	0	0	0		50
[12:45-13:00]	37	3	0	0	0	0	0	0		40
	155	12	2	2	1	0	0	0		172
[13:00-13:15]	41	0	0	0	0	0	0	0		41
[13:15-13:30]	40	0	0	1	0	0	0	0		41
[13:30-13:45]	30	1	2	0	0	0	0	0		33
[13:45-14:00]	40	3	0	0	0	0	0	0		43
	151	4	2	1	0	0	0	0		158
[14:00-14:15]	43	0	0	1	0	0	0	0		44

Time/Class Report

HI-Star ID: 9058
 Street: des Prairies
 State: Qc
 City: Brossard
 County: Canada

Begin: juin-16-10 23:00
 Lane: dir ouest Ontari
 Oper: OOO
 Posted: 50
 AADT Factor: 1

End: juin-21-10 00:15
 Hours: 97,25
 Period: 15
 Raw Count: 9520
 AADT Count: 2 349

Date	<	6,4	8,5	12,2	15,2	18,3	21,3	29,9	FN MF
And	to	to	to	to	to	to	to	to	
Time Range	6,3	8,4	12,1	15,1	18,2	21,2	29,8	>	
[22:15-22:30]	11	0	0	1	0	1	0	0	13
[22:30-22:45]	9	2	0	1	0	0	0	0	12
[22:45-23:00]	15	1	0	0	0	0	0	0	16
	42	4	0	2	0	1	0	0	49
[23:00-23:15]	9	1	0	0	0	0	0	0	10
[23:15-23:30]	10	0	0	1	0	0	0	0	11
[23:30-23:45]	3	1	1	0	0	0	0	0	5
[23:45-00:00]	5	2	0	0	0	0	0	0	7
dim.,juin-20-10									
	27	4	1	1	0	0	0	0	33
lun.,juin-21-10									
[00:00-00:15]	1	0	0	0	0	0	0	0	1
	1	0	0	0	0	0	0	0	1
juin-16-10 23:00									
juin-21-10 00:15	8373	615	165	178	18	10	5	0	9364

Time/Class Report

HI-Star ID: 9293
 Street: des Prairies
 State: Qc
 City: Brossard
 County: Canada

Begin: juin-16-10 23:00
 Lane: dir est oslo
 Oper: OOO
 Posted: 50
 AADT Factor: 1

End: juin-21-10 00:15
 Hours: 97,25
 Period: 15
 Raw Count: 7456
 AADT Count: 1 840

Date	<	6,4	8,5	12,2	15,2	18,3	21,3	29,9	
And	to	to	to	to	to	to	to	to	
Time Range	6,3	8,4	12,1	15,1	18,2	21,2	29,8	>	Total
mer.,juin-16-10									
[23:00-23:15]	1	0	0	0	0	0	0	0	1
[23:15-23:30]	4	0	0	0	0	0	0	0	4
[23:30-23:45]	5	0	0	0	0	0	0	0	5
[23:45-00:00]	5	1	0	0	0	0	0	0	6
	15	1	0	0	0	0	0	0	16
jeu.,juin-17-10									
[00:00-00:15]	4	0	0	0	0	0	0	0	4
[00:15-00:30]	2	1	0	0	0	0	0	0	3
[00:30-00:45]	3	0	1	0	0	0	0	0	4
[00:45-01:00]	6	0	0	0	0	0	0	0	6
	15	1	1	0	0	0	0	0	17
[01:00-01:15]	1	0	0	0	0	0	0	0	1
[01:15-01:30]	2	0	0	0	0	0	0	0	2
[01:30-01:45]	2	0	0	0	0	0	0	0	2
[01:45-02:00]	1	0	0	0	0	0	0	0	1
	6	0	0	0	0	0	0	0	6
[02:00-02:15]	0	0	0	0	0	0	0	0	0
[02:15-02:30]	1	0	0	0	0	0	0	0	1
[02:30-02:45]	2	0	0	0	0	0	0	0	2
[02:45-03:00]	1	0	0	0	0	0	0	0	1
	4	0	0	0	0	0	0	0	4
[03:00-03:15]	1	0	0	0	0	0	0	0	1
[03:15-03:30]	2	0	0	0	0	0	0	0	2
[03:30-03:45]	0	0	0	0	0	0	0	0	0
[03:45-04:00]	2	0	0	0	0	0	0	0	2
	5	0	0	0	0	0	0	0	5
[04:00-04:15]	0	0	0	0	0	0	0	0	0
[04:15-04:30]	0	0	0	0	0	0	0	0	0
[04:30-04:45]	1	0	0	0	0	0	0	0	1
[04:45-05:00]	0	0	0	0	0	0	0	0	0
	1	0	0	0	0	0	0	0	1
[05:00-05:15]	0	0	0	0	0	0	0	0	0
[05:15-05:30]	3	0	0	0	0	0	0	0	3
[05:30-05:45]	2	0	0	0	0	0	0	0	2
[05:45-06:00]	2	0	0	0	0	0	0	0	2
	7	0	0	0	0	0	0	0	7
[06:00-06:15]	2	1	0	0	0	0	0	0	3
[06:15-06:30]	8	2	0	0	0	0	0	0	10

Time/Class Report

HI-Star ID: 9293
 Street: des Prairies
 State: Qc
 City: Brossard
 County: Canada

Begin: juin-16-10 23:00
 Lane: dir est oslo
 Oper: OOO
 Posted: 50
 AADT Factor: 1

End: juin-21-10 00:15
 Hours: 97,25
 Period: 15
 Raw Count: 7456
 AADT Count: 1 840

Date	<	6,4	8,5	12,2	15,2	18,3	21,3	29,9	
And	to	to	to	to	to	to	to	to	
Time Range	6,3	8,4	12,1	15,1	18,2	21,2	29,8	>	Total
[06:30-06:45]	4	0	0	0	0	0	0	0	4
[06:45-07:00]	11	2	1	0	0	0	0	0	14
	25	5	1	0	0	0	0	0	31
jeu., juin-17-10									
[07:00-07:15]	10	0	2	0	0	0	0	0	12
[07:15-07:30]	17	2	0	0	0	0	0	0	19
[07:30-07:45]	19	1	0	0	0	0	0	0	20
[07:45-08:00]	16	1	1	0	0	0	0	0	18
	62	4	3	0	0	0	0	0	69
[08:00-08:15]	13	3	1	0	0	0	0	0	17
[08:15-08:30]	15	7	0	0	0	1	0	0	23
[08:30-08:45]	28	2	3	0	0	0	0	0	33
[08:45-09:00]	15	0	0	0	0	0	0	0	15
	71	12	4	0	0	1	0	0	88
[09:00-09:15]	14	1	1	0	0	0	0	0	16
[09:15-09:30]	12	1	1	0	0	0	0	0	14
[09:30-09:45]	12	1	1	0	0	0	0	0	14
[09:45-10:00]	15	0	1	0	0	0	0	0	16
	53	3	4	0	0	0	0	0	60
[10:00-10:15]	19	0	0	0	0	0	0	0	19
[10:15-10:30]	13	1	1	0	0	0	0	0	15
[10:30-10:45]	19	4	0	0	0	0	0	0	23
[10:45-11:00]	17	0	0	1	0	0	0	0	18
	68	5	1	1	0	0	0	0	75
[11:00-11:15]	17	1	0	1	0	0	0	0	19
[11:15-11:30]	18	2	0	0	0	0	0	0	20
[11:30-11:45]	18	1	1	1	0	0	0	0	21
[11:45-12:00]	18	1	1	1	0	0	0	0	21
	71	5	2	3	0	0	0	0	81
[12:00-12:15]	22	2	1	0	0	0	0	0	25
[12:15-12:30]	17	1	2	0	0	0	0	0	20
[12:30-12:45]	29	0	0	0	0	0	0	0	29
[12:45-13:00]	17	2	1	0	0	0	0	0	20
	85	5	4	0	0	0	0	0	94
[13:00-13:15]	20	2	0	1	0	0	0	0	23
[13:15-13:30]	6	2	0	0	0	1	0	0	9
[13:30-13:45]	24	2	1	0	0	0	0	0	27
[13:45-14:00]	14	0	0	0	0	0	0	0	14
	64	6	1	1	0	1	0	0	73

Time/Class Report

HI-Star ID: 9293
 Street: des Prairies
 State: Qc
 City: Brossard
 County: Canada

Begin: juin-16-10 23:00
 Lane: dir est oslo
 Oper: OOO
 Posted: 50
 AADT Factor: 1

End: juin-21-10 00:15
 Hours: 97,25
 Period: 15
 Raw Count: 7456
 AADT Count: 1 840

Date	<	6,4	8,5	12,2	15,2	18,3	21,3	29,9	
And	to	to	to	to	to	to	to	to	
Time Range	6,3	8,4	12,1	15,1	18,2	21,2	29,8	>	Total
[14:00-14:15]	21	1	0	1	0	0	0	0	23
[14:15-14:30]	15	3	0	0	0	0	0	0	18
[14:30-14:45]	18	2	2	0	0	0	0	0	22
[14:45-15:00]	18	1	0	0	0	0	0	0	19
	72	7	2	1	0	0	0	0	82
[15:00-15:15]	13	1	0	0	0	0	0	0	14
jeu.,juin-17-10									
[15:15-15:30]	8	0	0	0	0	0	0	0	8
[15:30-15:45]	8	0	0	0	0	0	0	0	8
[15:45-16:00]	5	0	0	0	0	0	0	0	5
	34	1	0	0	0	0	0	0	35
[16:00-16:15]	14	2	0	0	1	0	0	0	17
[16:15-16:30]	11	2	0	0	0	0	0	0	13
[16:30-16:45]	12	1	0	0	0	0	0	0	13
[16:45-17:00]	26	4	0	0	0	0	0	0	30
	63	9	0	0	1	0	0	0	73
[17:00-17:15]	38	5	1	0	0	0	0	0	44
[17:15-17:30]	57	3	1	0	0	0	0	0	61
[17:30-17:45]	52	4	3	0	0	0	0	0	59
[17:45-18:00]	48	1	1	0	0	0	0	0	50
	195	13	6	0	0	0	0	0	214
[18:00-18:15]	51	0	2	0	0	0	0	0	53
[18:15-18:30]	45	5	2	0	0	0	0	0	52
[18:30-18:45]	30	1	0	0	0	0	0	0	31
[18:45-19:00]	40	1	0	1	0	0	0	0	42
	166	7	4	1	0	0	0	0	178
[19:00-19:15]	45	1	1	0	0	0	0	0	47
[19:15-19:30]	38	1	0	0	0	0	0	0	39
[19:30-19:45]	26	3	1	1	0	0	0	0	31
[19:45-20:00]	38	5	1	0	0	0	0	0	44
	147	10	3	1	0	0	0	0	161
[20:00-20:15]	23	4	0	0	0	0	0	0	27
[20:15-20:30]	29	2	1	0	0	0	0	0	32
[20:30-20:45]	30	0	0	0	0	0	0	0	30
[20:45-21:00]	20	1	0	0	0	0	0	0	21
	102	7	1	0	0	0	0	0	110
[21:00-21:15]	28	3	0	1	0	0	0	0	32
[21:15-21:30]	23	1	0	0	0	0	0	0	24

Time/Class Report

HI-Star ID: 9293
 Street: des Prairies
 State: Qc
 City: Brossard
 County: Canada

Begin: juin-16-10 23:00
 Lane: dir est oslo
 Oper: OOO
 Posted: 50
 AADT Factor: 1

End: juin-21-10 00:15
 Hours: 97,25
 Period: 15
 Raw Count: 7456
 AADT Count: 1 840

Date	<	6,4	8,5	12,2	15,2	18,3	21,3	29,9	
And	to	to	to	to	to	to	to	to	
Time Range	6,3	8,4	12,1	15,1	18,2	21,2	29,8	>	Total
[12:30-12:45]	45	3	0	0	0	0	0	0	48
[12:45-13:00]	28	0	1	0	0	0	0	0	29
	124	5	2	0	0	0	0	0	131
[13:00-13:15]	30	1	0	0	0	0	0	0	31
[13:15-13:30]	26	2	1	0	0	0	0	0	29
[13:30-13:45]	16	0	1	0	0	0	0	1	18
[13:45-14:00]	23	3	0	2	0	0	0	0	28
	95	6	2	2	0	0	0	1	106
[14:00-14:15]	20	0	1	0	0	0	0	0	21
[14:15-14:30]	28	2	1	1	0	0	0	0	32
[14:30-14:45]	27	1	1	0	0	0	0	0	29
[14:45-15:00]	25	2	0	0	0	0	0	0	27
	100	5	3	1	0	0	0	0	109
[15:00-15:15]	35	1	1	0	0	0	0	0	37
[15:15-15:30]	37	4	1	0	0	0	0	0	42
[15:30-15:45]	19	1	0	0	0	1	0	0	21
ven.,juin-18-10									
[15:45-16:00]	22	2	0	1	0	0	0	0	25
	113	8	2	1	0	1	0	0	125
[16:00-16:15]	12	0	0	0	0	0	0	0	12
[16:15-16:30]	40	2	1	0	0	0	0	0	43
[16:30-16:45]	49	0	2	0	0	0	0	0	51
[16:45-17:00]	56	1	0	0	0	1	0	0	58
	157	3	3	0	0	1	0	0	164
[17:00-17:15]	42	1	0	0	0	0	0	0	43
[17:15-17:30]	58	1	0	0	0	0	0	0	59
[17:30-17:45]	51	0	0	0	0	0	0	0	51
[17:45-18:00]	61	5	1	0	0	0	0	0	67
	212	7	1	0	0	0	0	0	220
[18:00-18:15]	40	2	1	0	0	0	0	0	43
[18:15-18:30]	48	1	0	0	0	0	0	0	49
[18:30-18:45]	47	3	0	0	0	0	0	0	50
[18:45-19:00]	43	2	0	0	0	0	0	0	45
	178	8	1	0	0	0	0	0	187
[19:00-19:15]	20	0	0	0	0	0	1	0	21
[19:15-19:30]	36	2	0	0	1	0	0	0	39
[19:30-19:45]	37	1	2	0	0	0	0	0	40
[19:45-20:00]	48	0	0	0	0	0	0	0	48
	141	3	2	0	1	0	1	0	148

Time/Class Report

HI-Star ID: 9293
 Street: des Prairies
 State: Qc
 City: Brossard
 County: Canada

Begin: juin-16-10 23:00
 Lane: dir est oslo
 Oper: OOO
 Posted: 50
 AADT Factor: 1

End: juin-21-10 00:15
 Hours: 97,25
 Period: 15
 Raw Count: 7456
 AADT Count: 1 840

Date	<	6,4	8,5	12,2	15,2	18,3	21,3	29,9	
And	to	to	to	to	to	to	to	to	
Time Range	6,3	8,4	12,1	15,1	18,2	21,2	29,8	>	Total
	134	6	3	0	0	0	0	0	143
[11:00-11:15]	38	4	1	0	0	0	0	0	43
[11:15-11:30]	43	4	0	0	0	0	0	0	47
[11:30-11:45]	44	4	0	0	0	0	0	0	48
[11:45-12:00]	44	2	1	0	0	0	0	0	47
	169	14	2	0	0	0	0	0	185
[12:00-12:15]	34	1	0	0	0	0	0	0	35
[12:15-12:30]	34	0	0	0	0	0	0	0	34
[12:30-12:45]	29	4	1	0	0	0	0	0	34
[12:45-13:00]	42	0	0	0	0	0	0	0	42
	139	5	1	0	0	0	0	0	145
[13:00-13:15]	39	0	0	0	0	0	0	0	39
[13:15-13:30]	43	1	1	0	0	0	0	0	45
[13:30-13:45]	40	1	0	0	0	0	0	0	41
[13:45-14:00]	40	2	0	0	0	0	0	0	42
	162	4	1	0	0	0	0	0	167
[14:00-14:15]	44	2	1	0	0	0	0	0	47
[14:15-14:30]	47	0	0	0	0	0	0	0	47
[14:30-14:45]	42	2	0	0	0	0	0	0	44
[14:45-15:00]	34	2	0	0	0	0	0	0	36
	167	6	1	0	0	0	0	0	174
[15:00-15:15]	39	1	0	0	0	0	0	0	40
[15:15-15:30]	50	1	1	0	0	0	0	0	52
[15:30-15:45]	44	1	1	0	0	0	0	0	46
[15:45-16:00]	50	3	0	0	0	0	0	0	53
sam.,juin-19-10									
	183	6	2	0	0	0	0	0	191
[16:00-16:15]	40	2	2	0	0	0	0	0	44
[16:15-16:30]	38	1	0	0	0	0	0	0	39
[16:30-16:45]	37	2	0	1	0	0	0	0	40
[16:45-17:00]	32	0	0	0	0	0	0	0	32
	147	5	2	1	0	0	0	0	155
[17:00-17:15]	34	2	0	0	0	0	0	0	36
[17:15-17:30]	20	1	1	0	0	0	0	0	22
[17:30-17:45]	31	4	1	0	0	0	0	0	36
[17:45-18:00]	18	0	0	0	0	0	0	0	18
	103	7	2	0	0	0	0	0	112
[18:00-18:15]	20	0	0	0	0	0	0	0	20
[18:15-18:30]	22	1	0	0	0	0	0	0	23

Time/Class Report

HI-Star ID: 9293
 Street: des Prairies
 State: Qc
 City: Brossard
 County: Canada

Begin: juin-16-10 23:00
 Lane: dir est oslo
 Oper: OOO
 Posted: 50
 AADT Factor: 1

End: juin-21-10 00:15
 Hours: 97,25
 Period: 15
 Raw Count: 7456
 AADT Count: 1 840

Date	<	6,4	8,5	12,2	15,2	18,3	21,3	29,9	
And	to	to	to	to	to	to	to	to	
Time Range	6,3	8,4	12,1	15,1	18,2	21,2	29,8	>	Total
[09:30-09:45]	26	3	0	0	0	0	0	0	29
[09:45-10:00]	23	1	1	0	0	0	0	0	25
	86	6	1	0	0	1	0	0	94
[10:00-10:15]	33	3	0	0	0	0	0	0	36
[10:15-10:30]	23	1	0	1	0	0	0	0	25
[10:30-10:45]	30	0	1	0	0	0	0	0	31
[10:45-11:00]	36	0	1	0	0	0	0	0	37
	122	4	2	1	0	0	0	0	129
[11:00-11:15]	31	0	0	0	0	0	0	0	31
[11:15-11:30]	33	3	0	1	0	0	0	0	37
[11:30-11:45]	30	1	1	1	0	0	0	0	33
[11:45-12:00]	32	1	0	0	0	0	0	0	33
	126	5	1	2	0	0	0	0	134
[12:00-12:15]	35	0	0	0	0	0	0	0	35
[12:15-12:30]	27	0	1	0	0	0	0	0	28
[12:30-12:45]	25	3	1	0	0	0	0	0	29
[12:45-13:00]	24	2	2	0	0	0	0	0	28
	111	5	4	0	0	0	0	0	120
[13:00-13:15]	35	0	0	0	0	0	0	0	35
[13:15-13:30]	31	2	1	0	0	0	0	0	34
[13:30-13:45]	23	3	1	0	0	0	0	0	27
[13:45-14:00]	27	4	0	1	0	0	0	0	32
	116	9	2	1	0	0	0	0	128
[14:00-14:15]	21	2	1	0	0	0	0	0	24
[14:15-14:30]	25	2	1	1	0	0	0	0	29
[14:30-14:45]	22	3	1	1	0	0	0	0	27
[14:45-15:00]	32	2	2	2	0	0	0	0	38
	100	9	5	4	0	0	0	0	118
[15:00-15:15]	26	2	1	0	0	0	0	0	29
[15:15-15:30]	38	2	0	0	0	0	0	0	40
[15:30-15:45]	30	2	1	0	0	0	0	1	34
[15:45-16:00]	33	1	3	0	0	0	0	0	37
dim.,juin-20-10									
	127	7	5	0	0	0	0	1	140
[16:00-16:15]	24	2	1	1	1	0	0	0	29
[16:15-16:30]	23	0	1	0	0	0	0	0	24
[16:30-16:45]	18	3	3	0	0	0	0	0	24
[16:45-17:00]	26	2	0	0	0	0	0	0	28
	91	7	5	1	1	0	0	0	105

Time/Class Report

HI-Star ID: 9293
 Street: des Prairies
 State: Qc
 City: Brossard
 County: Canada

Begin: juin-16-10 23:00
 Lane: dir est oslo
 Oper: OOO
 Posted: 50
 AADT Factor: 1

End: juin-21-10 00:15
 Hours: 97,25
 Period: 15
 Raw Count: 7456
 AADT Count: 1 840

Date	<	6,4	8,5	12,2	15,2	18,3	21,3	29,9	
And	to	to	to	to	to	to	to	to	
Time Range	6,3	8,4	12,1	15,1	18,2	21,2	29,8	>	Total
	2	0	0	0	0	0	0	0	2
juin-16-10 23:00									
juin-21-10 00:15	6732	354	142	39	6	6	2	2	7283